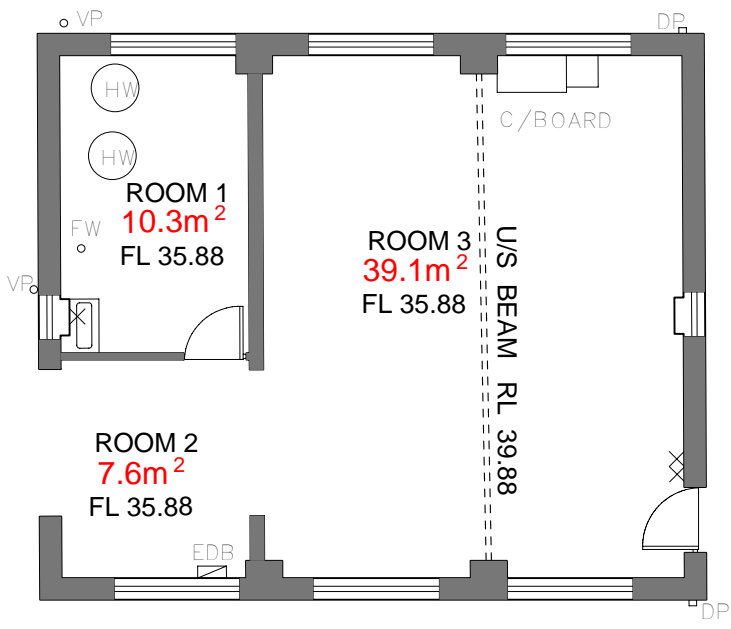



BUILDING '2'
 TOTAL BLD GLA = 65.9m²
 TOTAL BLD NLA = 57.0m²



	INITIALS	DATE
DRAWN	FH	Dec 2008
DWG CHECK	MB	Dec 2008
APPROVED	MB	Dec 2008



PO BOX 607 MOSMAN, NSW, AUSTRALIA. 2088
 TEL (+61 2) 8969 2100 FAX (+61 2) 8969 2120

SITE		10 Terminal, Middle Head			DWG NO
TITLE		Building 02 Net Lettable Areas			01
ORIG. DWG SIZE	A4	SCALE	1:100		REV
CAD FILE NAME		FILE REF		PLOT DATE	Dec. 2008
					A