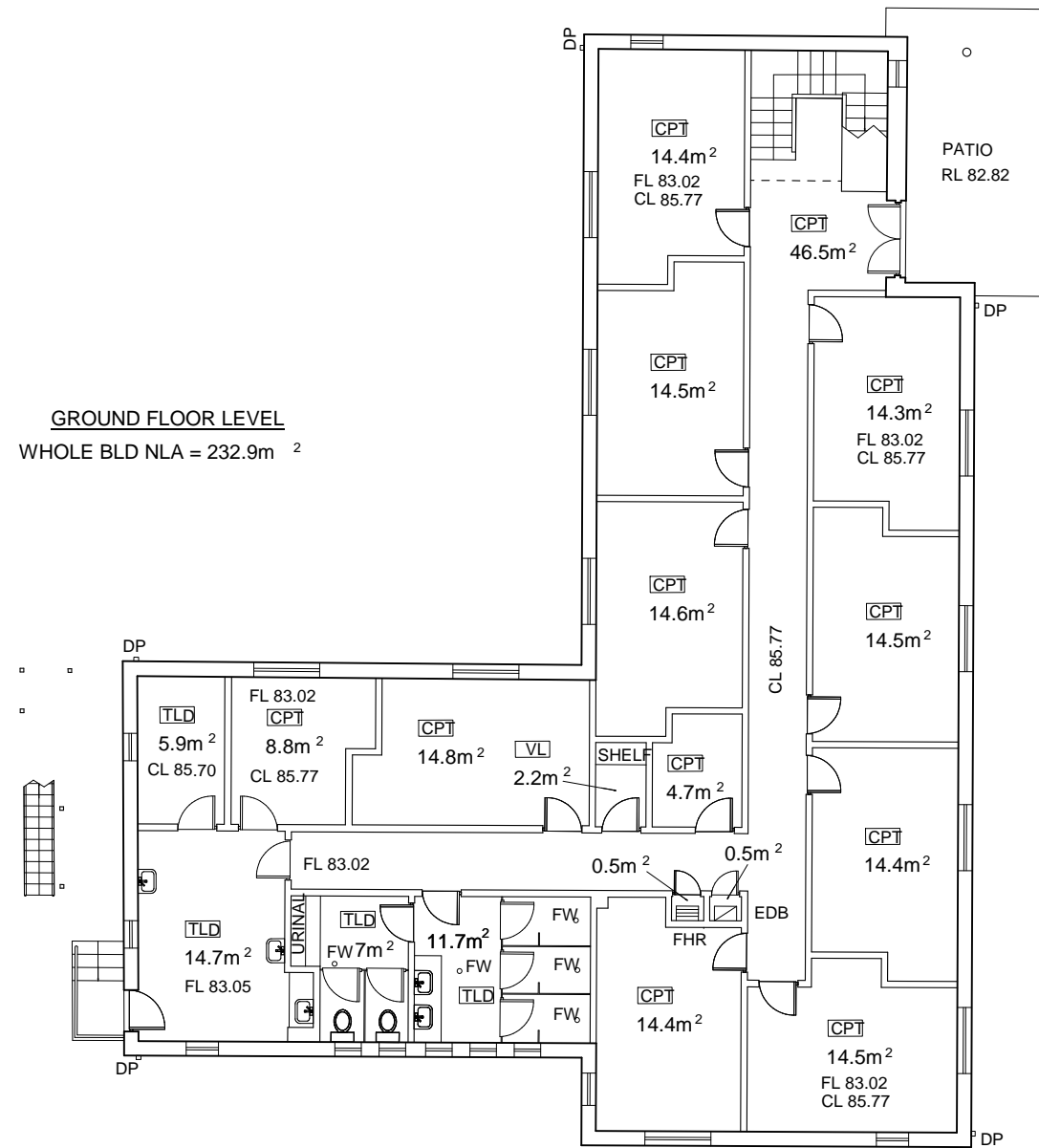
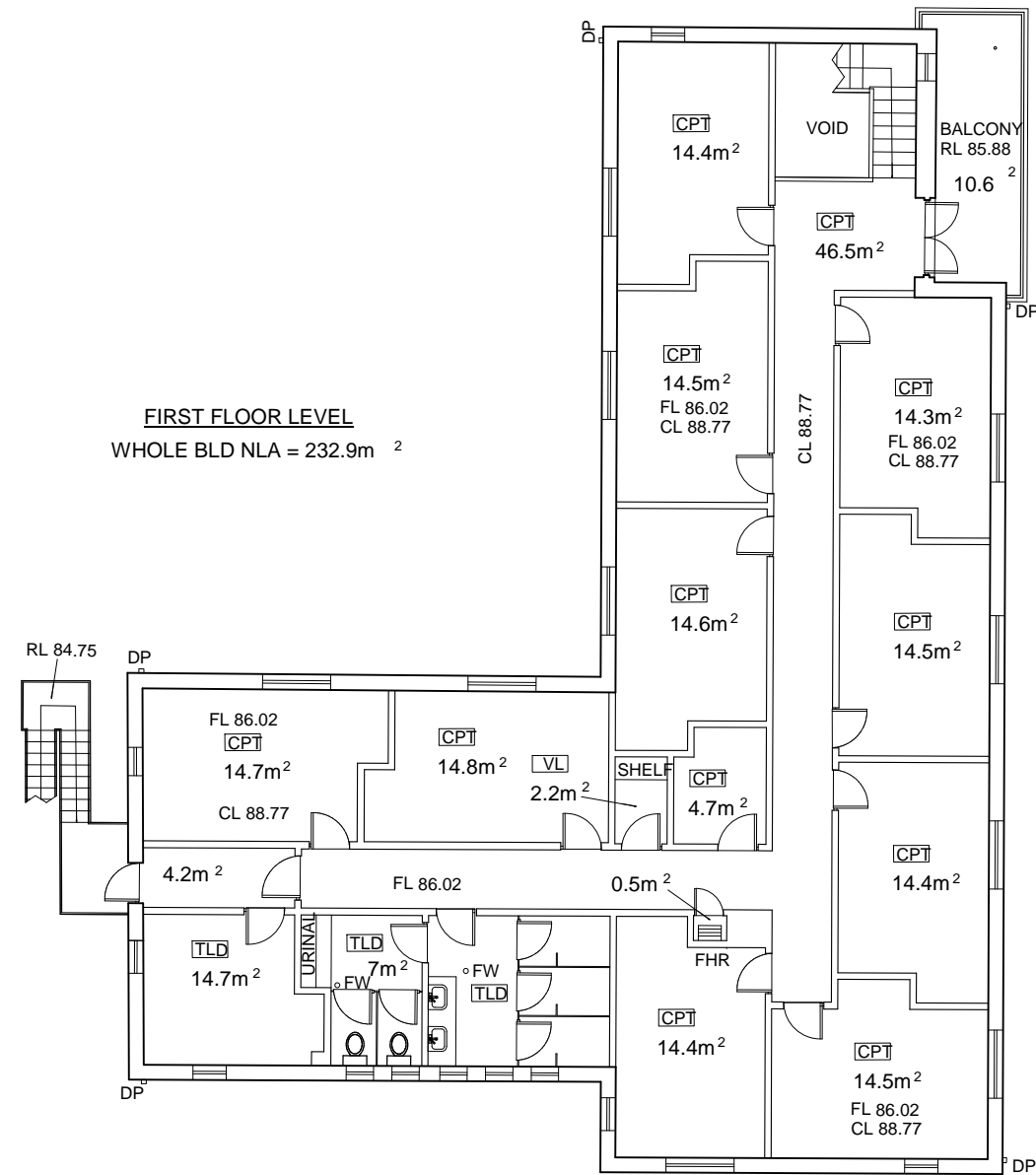


GROUND FLOOR LEVEL
WHOLE BLD NLA = 232.9m²



FIRST FLOOR LEVEL
WHOLE BLD NLA = 232.9m²



BUILDING '46'
WHOLE BLD NLA = 465.8m²
WHOLE BLD GLA = 515m²



	INITIALS	DATE
DRAWN	FH	April 09
DWG CHECK		
APPROVED		



PO BOX 607 MOSMAN, NSW, AUSTRALIA, 2088
TEL (+61 2) 8969 2100 FAX (+61 2) 8969 2120

SITE		NORTH HEAD - SCHOOL OF ARTILLERY			DWG NO 01
TITLE		BUILDING 46 NET LETTABLE AREAS			
ORIG. DWG SIZE	A3	SCALE	1:150	REV A	
CAD FILE NAME		FILE REF	PLOT DATE April 09		