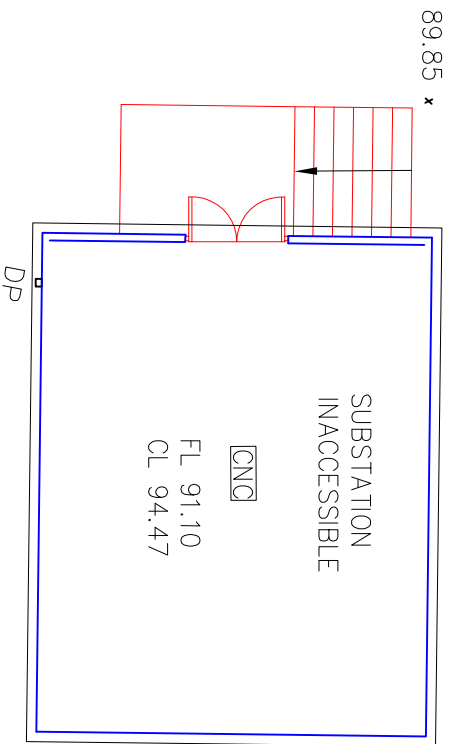
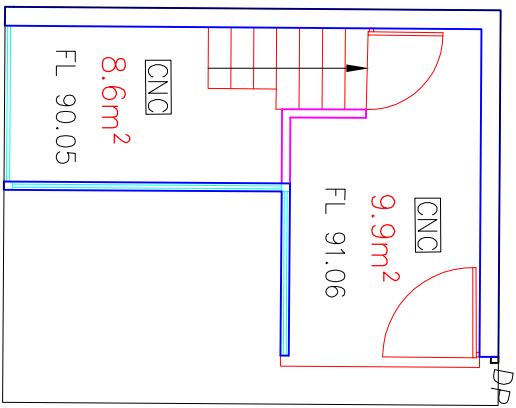
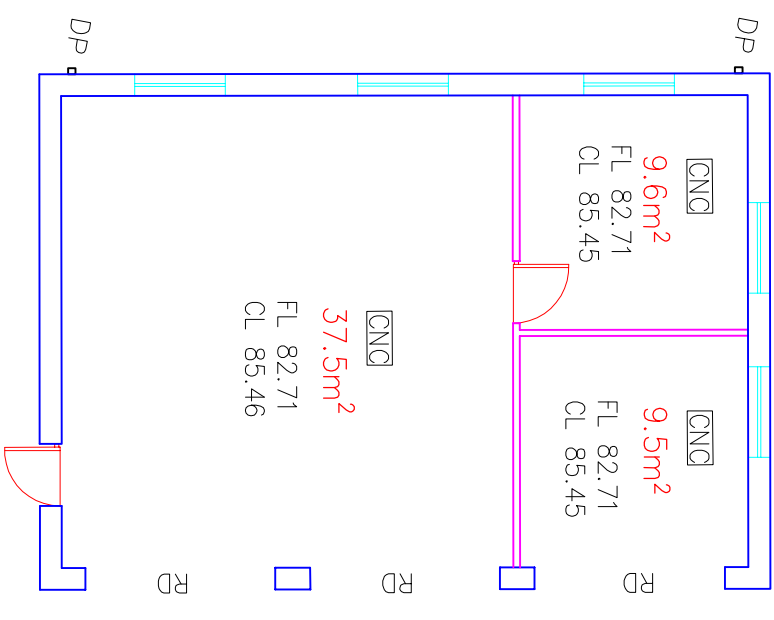
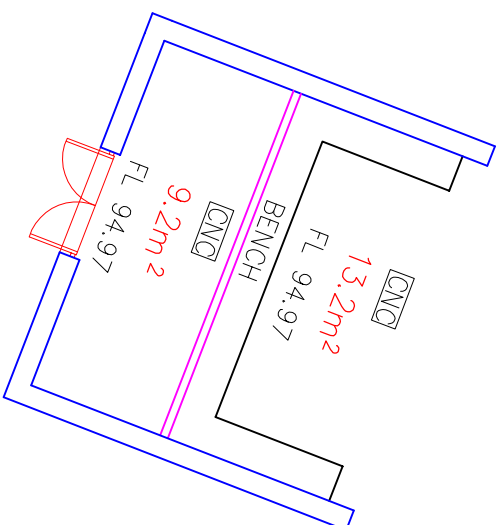


BUILDING '11'
 WHOLE BLD NLA = 18.5m²
 WHOLE BLD GLA = 22.1m²

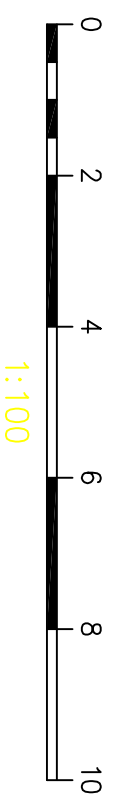


BUILDING '9'
 WHOLE BLD GLA = 34.0m²

BUILDING '10'
 WHOLE BLD NLA = 22.4m²
 WHOLE BLD GLA = 26.5m²



BUILDING '43'
 WHOLE BLD NLA = 56.6m²
 WHOLE BLD GLA = 65.9m²



CPT = CARPET	FL = FLOOR LEVEL	DR = DOOR
CNC = CONCRETE FLOOR	CL = CEILING LEVEL	W = WINDOW
VL = VINYL FLOORING	DP = DOWNPIPE	MS = METAL SHEETING
TLD = TILED FLOOR	WP = WATER PIPE	BK = BRICK
FHR = FIRE HORSE REEL	FH = FIRE HYDRANT	CI = CORRUGATED IRON
EBS = ELECTRICAL DISTRIBUTION BOARD	HW = HOT WATER TANK	FBS = FIBRO SHEETING
U/S = UNDERSIDE	FW = FLOOR WASTE	WB = WEATHERBOARD
TBR = TIMBER FLOOR BOARDS	CVL = GRAVEL FLOOR	RL = REDUCED LEVEL
BIT = BITUMEN FLOOR	DRT = DIRT FLOOR	RSC = ROOF SEAL COVERING

Sydney Harbour Federation Trust
 PO BOX 607 MOSMAN, NSW, AUSTRALIA, 2088
 TEL (+61 2) 8969 2100 FAX (+61 2) 8969 2120

SITE	NORTH HEAD - SCHOOL OF ARTILLARY	DWG No.	2
TITLE	PLAN OF BUILDING LAYOUT AND NETT LETTABLE AREAS	SHEET	2
ORIG. DWG SIZE	A3	SCALE	1:100
CAD FILE NAME	28312DT	FILE REF	28312
		PLOT DATE	21-12-04
		SHEETS	185