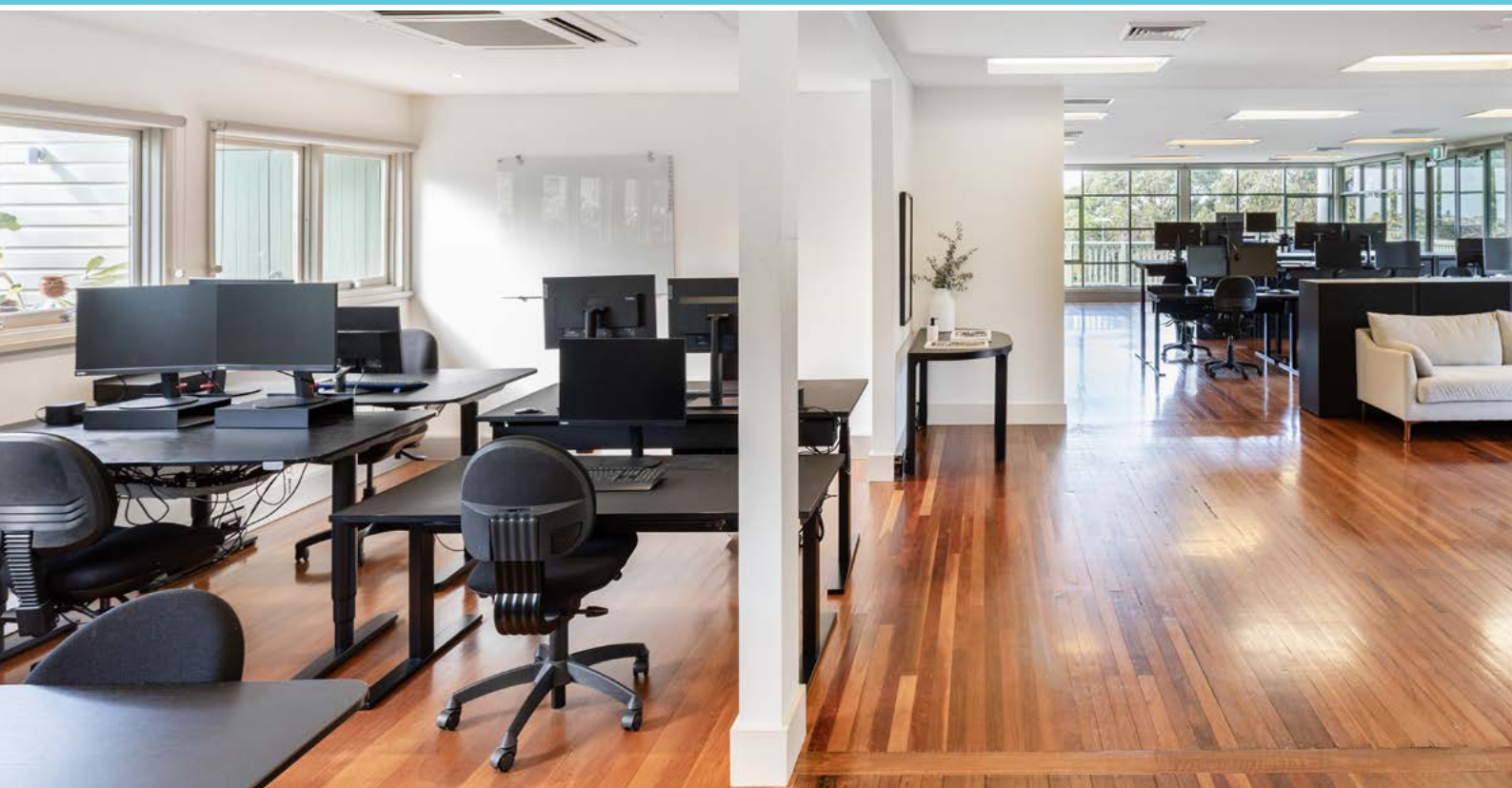


FOR LEASE

Building 24, Best Ave
Georges Heights, Headland Park, Mosman

Harbour
Trust



Above: Location images.

Light-filled landmark building with parkland outlook

Position your business within one of Sydney's most stunning urban parklands set in the prestigious Georges Heights precinct at Headland Park, Mosman.


A premium commercial space in the heart of Headland Park, this outstanding stand-alone heritage building offers 366m² (approx) of flexible, light-filled space with exceptional natural surroundings and commanding local exposure.

Set within 40 hectares of landscaped parkland, surrounded by a thriving community of diverse businesses this location is designed to inspire. It offers a tranquil environment for forward-thinking businesses wanting more than an office space but a place. Ideal for businesses seeking prestige, privacy and access to Sydney's most desirable clientele.

This is more than a workspace, it tells your story.

Available 2026.

 **Net lettable area**
Suite: 366m² (approx.)

 **Rent**
\$180,000 per annum + outgoings + GST

Enquiries

For further details about this property or to organise an inspection, please contact:

James Maxwell, Leasing Executive

0448 110 016

james.maxwell@harbourtrust.gov.au

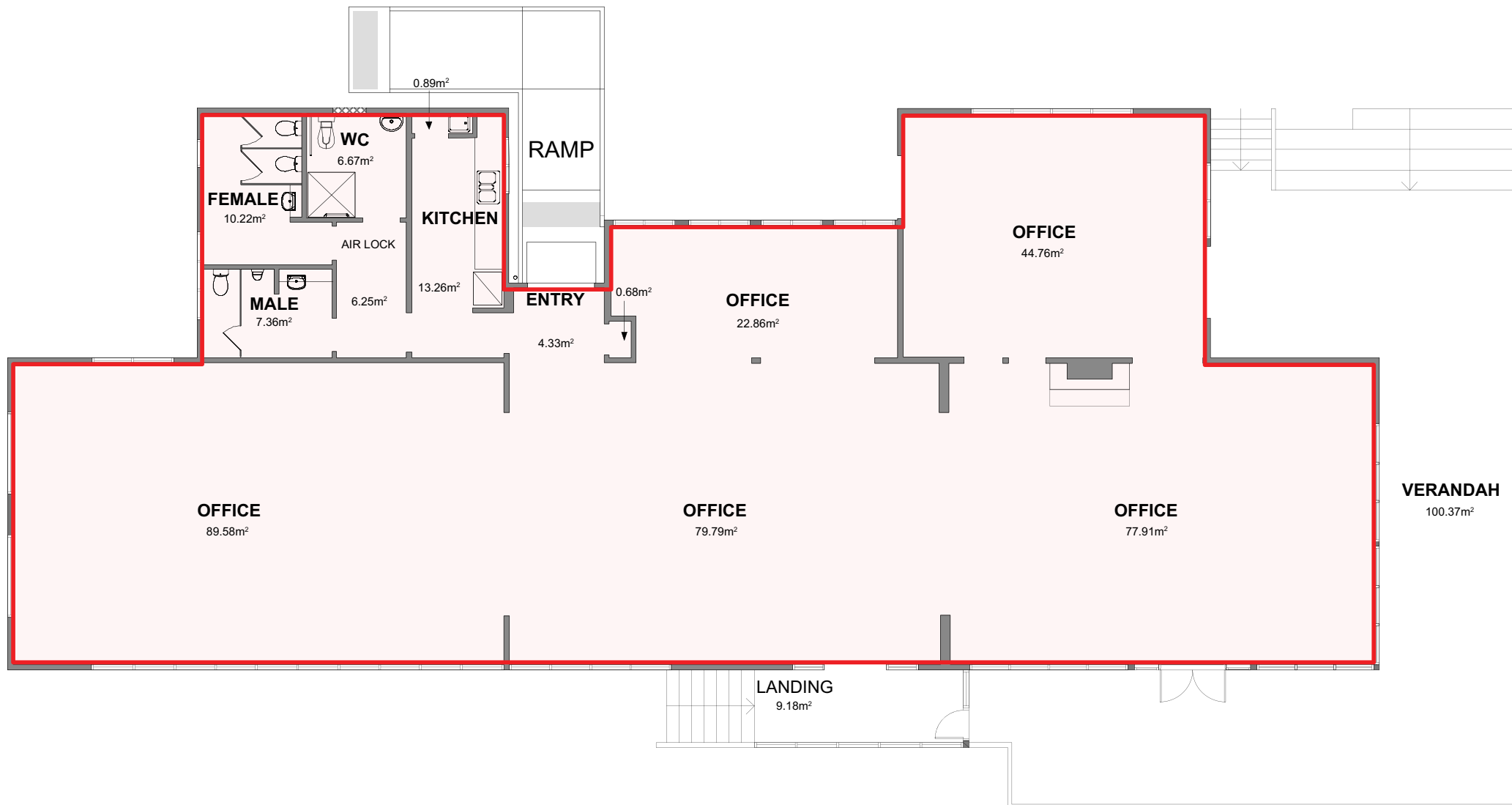
harbourtrust.gov.au/lease



Map legend

● ● ● Main walking routes

● Harbour Trust sites



Building 24, Best Ave, Georges Heights, Headland Park, Mosman