

CONCEPTUAL APPROACH

INTRODUCTION

Having a rich industrial heritage spanning nearly 200 years, the bones of Platypus are already in place with numerous buildings suitable for adaptive re-use.

Some, like the cast iron structure of the Retort House, have heritage significance in their own right and should be handled with sensitivity. Others, like RANTME, FIMA and the Submarine School, are robust industrial buildings with cultural heritage values suitable for intervention and innovative uses. They are simple and honest working buildings, bathed with cool and soft southern light, awaiting a new life.

The natural sandstone cliff face and road cutting separate the upper and lower site and add an expressive topological feature to the site that is emblematic of the Sydney locale. The wharf and waterfront gives the site a publicly accessible address to Neutral Bay. Platypus is suited as a vibrant zone of recreation, small scale business and cultural activity.

In its current state, Platypus seems isolated and disconnected from the rest of Sydney. Currently missing are the pedestrian linkages that will weave the site into its local and regional context. Within the site, the many level changes make universal access difficult and orientation unclear.

Conceptually, all architectural injections into the site aim to be non-invasive and 'touch the site lightly', retaining both the existing industrial language and ecological ecosystems found on the site. Minor interventions to assist in the accessibility and orientation around the site such as a new lift, 'clip-on' cliff side walkways, stairs and bridge links are all imagined as a lightweight framed and clip-on family of forms – clearly modern, but taking their clue from the structural expressive of the industrial buildings.

These are supported through creating a cohesive and pleasant public domain of interlinked squares and recreational green spaces. Providing an important counterpoint to the existing built fabric and consistent narrative for the site, they will provide places to rest, play, meet, take in the views and provide space for temporary events.

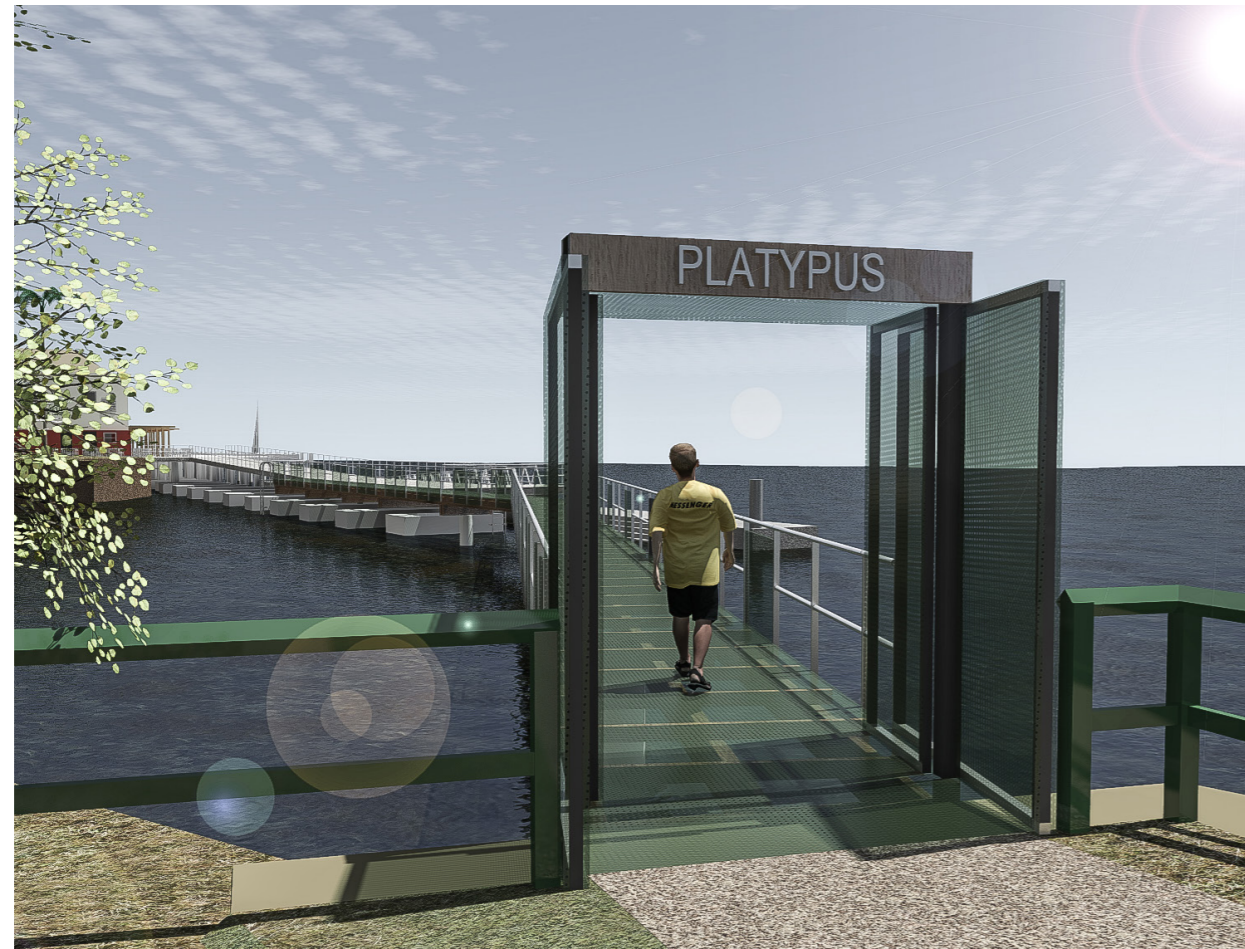
Central to the site's renewal is the new public plaza - 'Arrival Square'. Arrival Square becomes the front door of the site. This is where all the arrival paths converge, providing a central place for site interpretation and exploration to commence. It provides an important breathing space between the FIMA and RANTME buildings and opens up a significant view corridor along the road cutting from High Street.



1 • KESTERTON PARK LINK

Kesterton Park Link

The Kesterton Park link is an important component in linking Platypus into the regional network of open space and transport. With direct pedestrian access from the North Sydney Ferry Wharf via Kesterton Park, the bridge is seen as a significant new front door to the site and the proposed design draws on the maritime context for its expression.

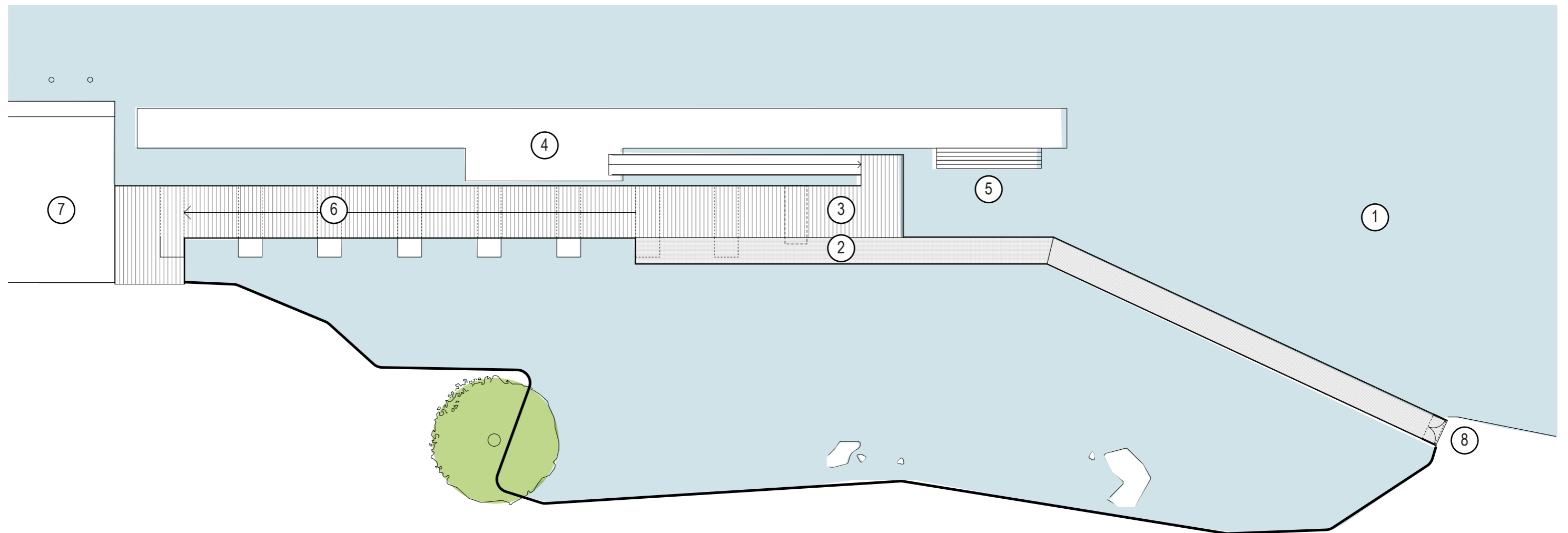


3D REPRESENTATION - KESTERTON PARK ENTRY



EXISTING HARBOUR AND SHORELINE BETWEEN KESTERTON PARK AND PLATYPUS

1 • KESTERTON PARK LINK PLAN

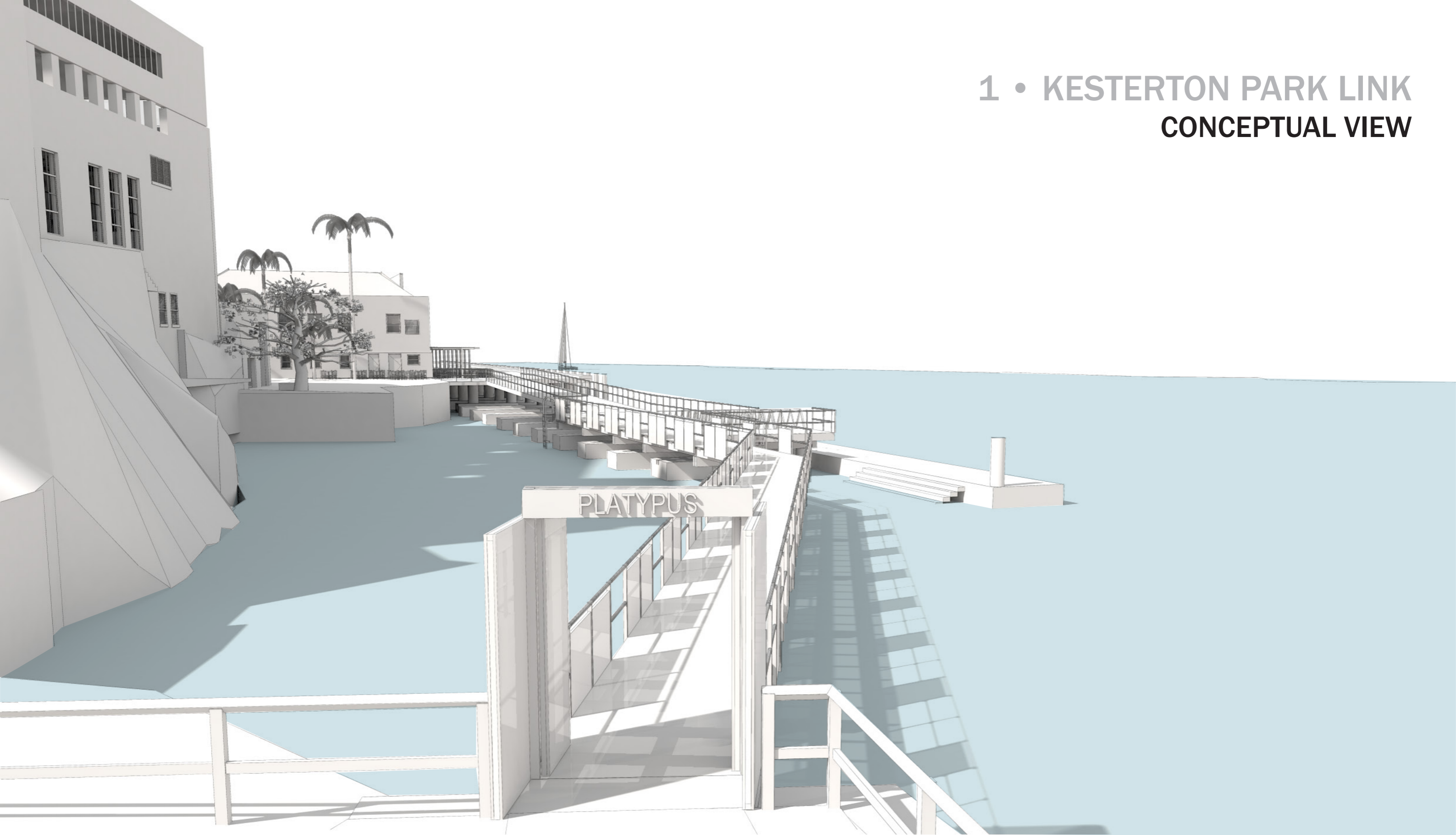


ASPECT Studios™
lahznimmo
architects

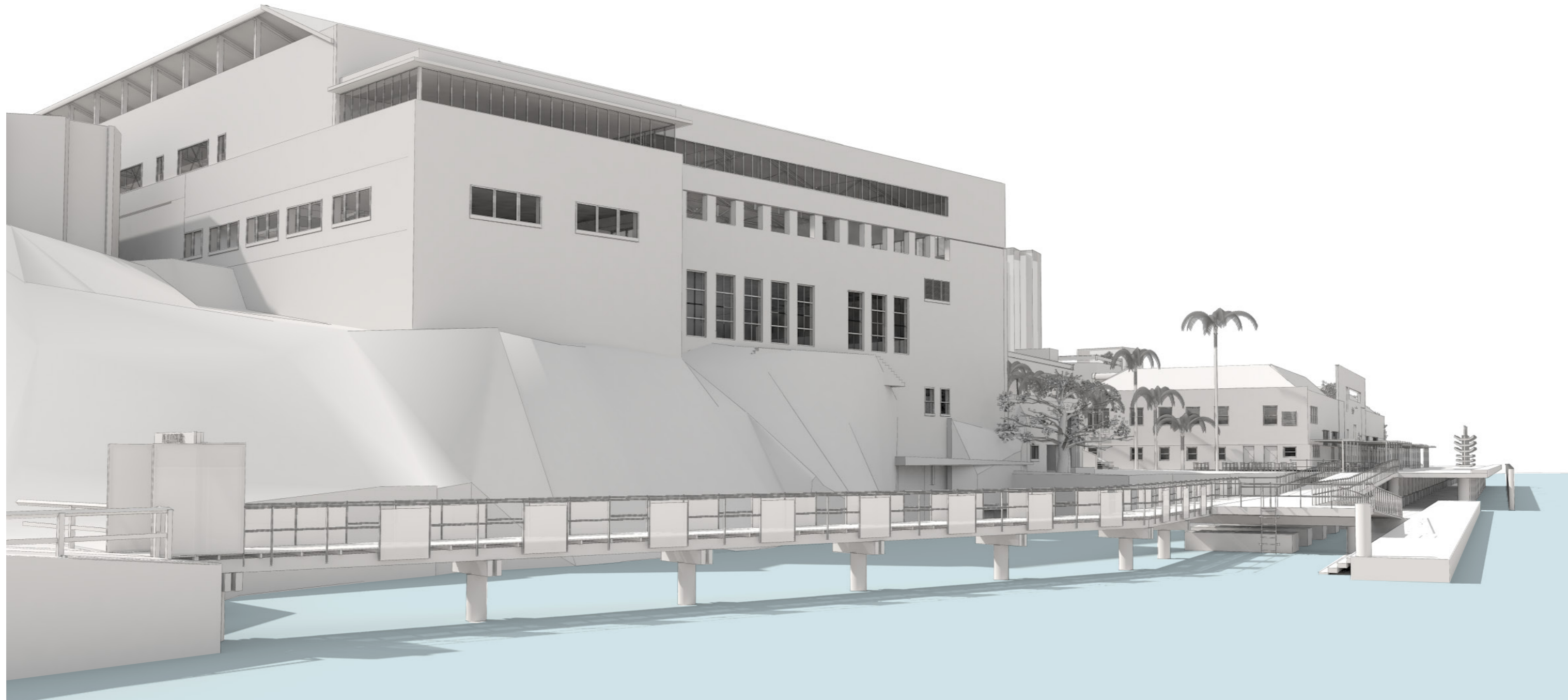
- ① Sydney Harbour
- ② Footbridge- lightweight FRP grating walkway (fibre-reinforced polymer) with stainless steel balustrade
- ③ Hardwood extension to existing wharf
- ④ Floating concrete pontoon for medium size vessel landing - Future works subject to funding
- ⑤ Concrete steps down into water for kayak launching - Future works subject to funding
- ⑥ Hardwood walkway up to existing wharf level
- ⑦ Existing HMAS Platypus wharf
- ⑧ Entry portal at Kesterton Park

PLATYPUS
33.8440° S, 151.2165° E

1 • KESTERTON PARK LINK CONCEPTUAL VIEW



1 • KESTERTON PARK LINK CONCEPTUAL VIEW



2 • GATEWAY PLAZA ENTRY + GATEHOUSE REFURBISHMENT PLAN



Gateway Park
 The current design provides an interim solution until the RANTME building as a whole is adaptively re-used. Removal and reduction of existing visual barriers such as walls and fences allows for an open and inviting interface to the street frontage through a new pocket park. The Plaza is open for use by the public and provides an improved curtilage to the refurbished Gatehouse building.

1. Public carpark entry ramp as per architect's drawings
2. Existing concrete surface to be retained, patched and made good where necessary
3. Stair up to RANTME - refer to architect's details.
4. Raised turf with recycled brick seating edge
5. Recycled brick to courtyard to gatehouse
6. Line markings for informal parking spaces
7. Existing grated drain to be replaced with new FRP grating placed into existing steel frame
8. Existing concrete stairs made compliant with base concrete ramp removed and handrails replaced and tactiles.
9. Concrete industrial pipe pots with feature planting
10. Existing brick wall/fence to street be cut down to 500mm height with 4x timber clip-on bench seats
11. Boomgate
12. Raised mass planting bed with recycled brick informal seating edge
13. Chainlink screening walls fixed to RANTME
14. 2x new street trees
15. Existing trees retained
16. Heritage interpretation wayfinding panels - not part of this scope
17. Gateway building refurbished to create two new apartments

NOTES:

- All trees shown are proposed unless otherwise indicated
- 1x existing London Plane street tree removed
- Parking in RANTME building as per architect's details.
- Any trees and other proposed planting is subject to council approval



P L A T Y P U S

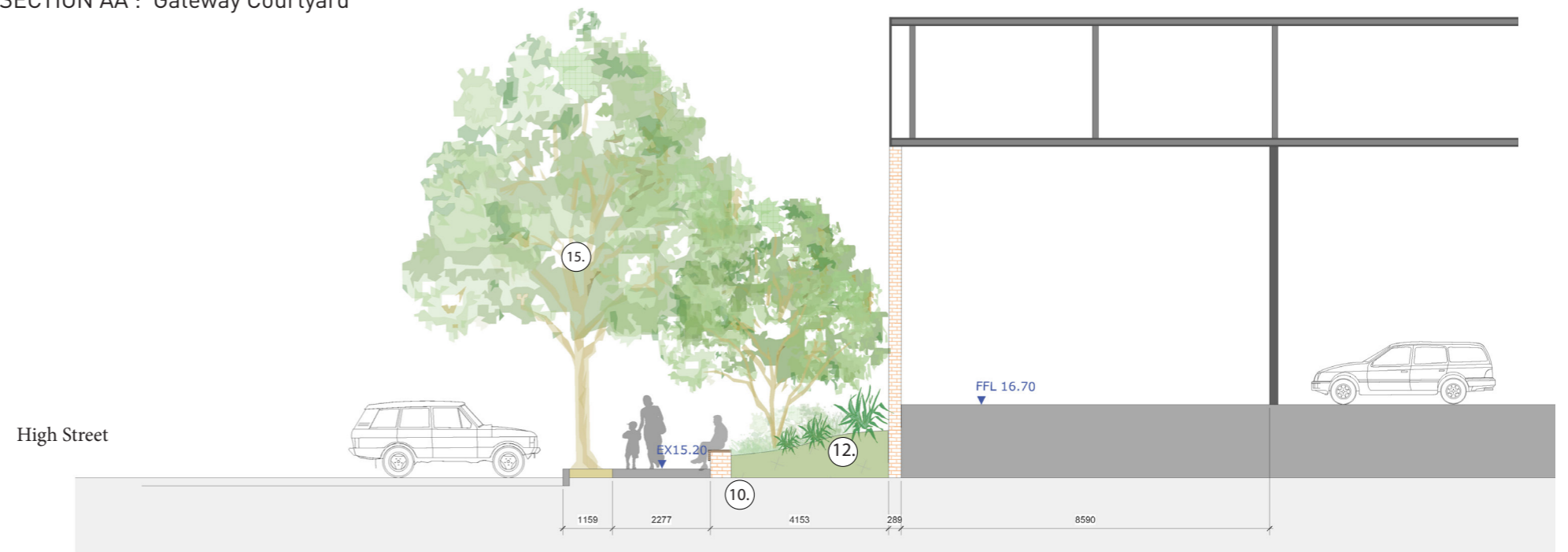
33.8440° S, 151.2165° E

2 • GATEWAY PLAZA ENTRY + GATEHOUSE REFURBISHMENT SECTIONS

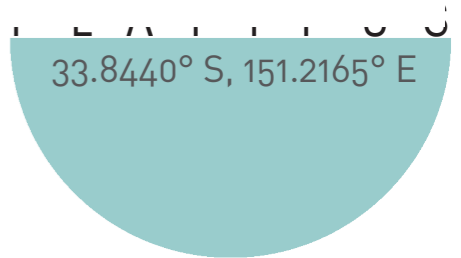
- ①. Public carpark entry ramp as per architect's drawings
- ②. Existing concrete surface to be retained, patched and made good where necessary
- ③. Stair up to RANTME - refer to architect's details.
- ④. Raised turf with recycled brick seating edge
- ⑤. Recycled brick to courtyard to gatehouse
- ⑥. Line markings for informal parking spaces
- ⑦. Existing grated drain to be replaced with new FRP grating placed into existing steel frame
- ⑧. Existing concrete stairs made compliant with base concrete ramp removed and handrails replaced and tactiles.
- ⑨. Concrete industrial pipe pots with feature planting
- ⑩. Existing brick wall/fence to street be cut down to 500mm height with 4x timber clip-on bench seats
- ⑪. Boomgate
- ⑫. Raised mass planting bed with recycled brick informal seating edge
- ⑬. Chainlink screening walls fixed to RANTME
- ⑭. 2x new street trees
- ⑮. Existing trees retained



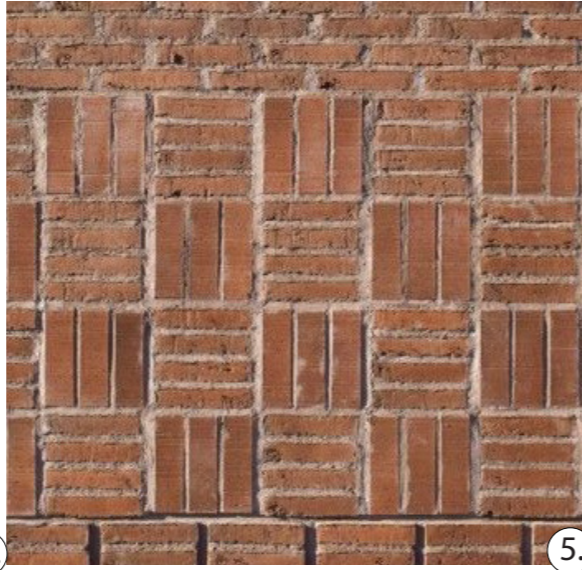
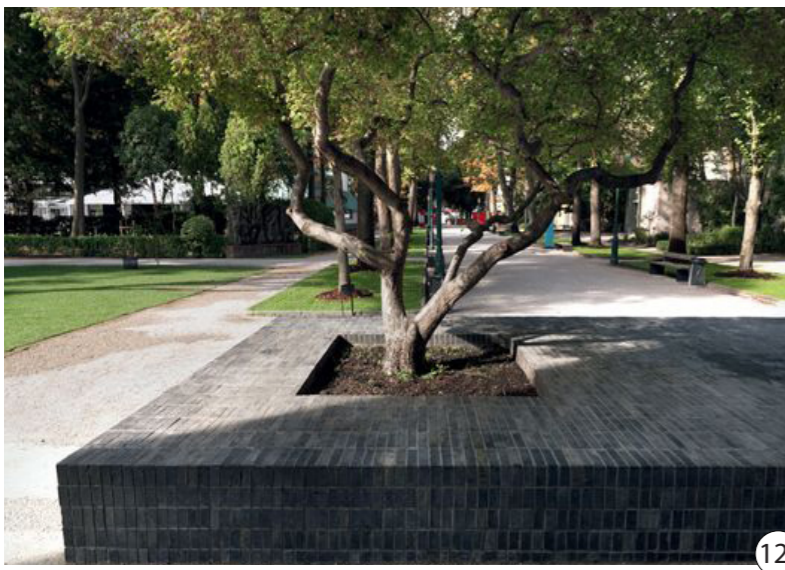
SECTION AA : Gateway Courtyard



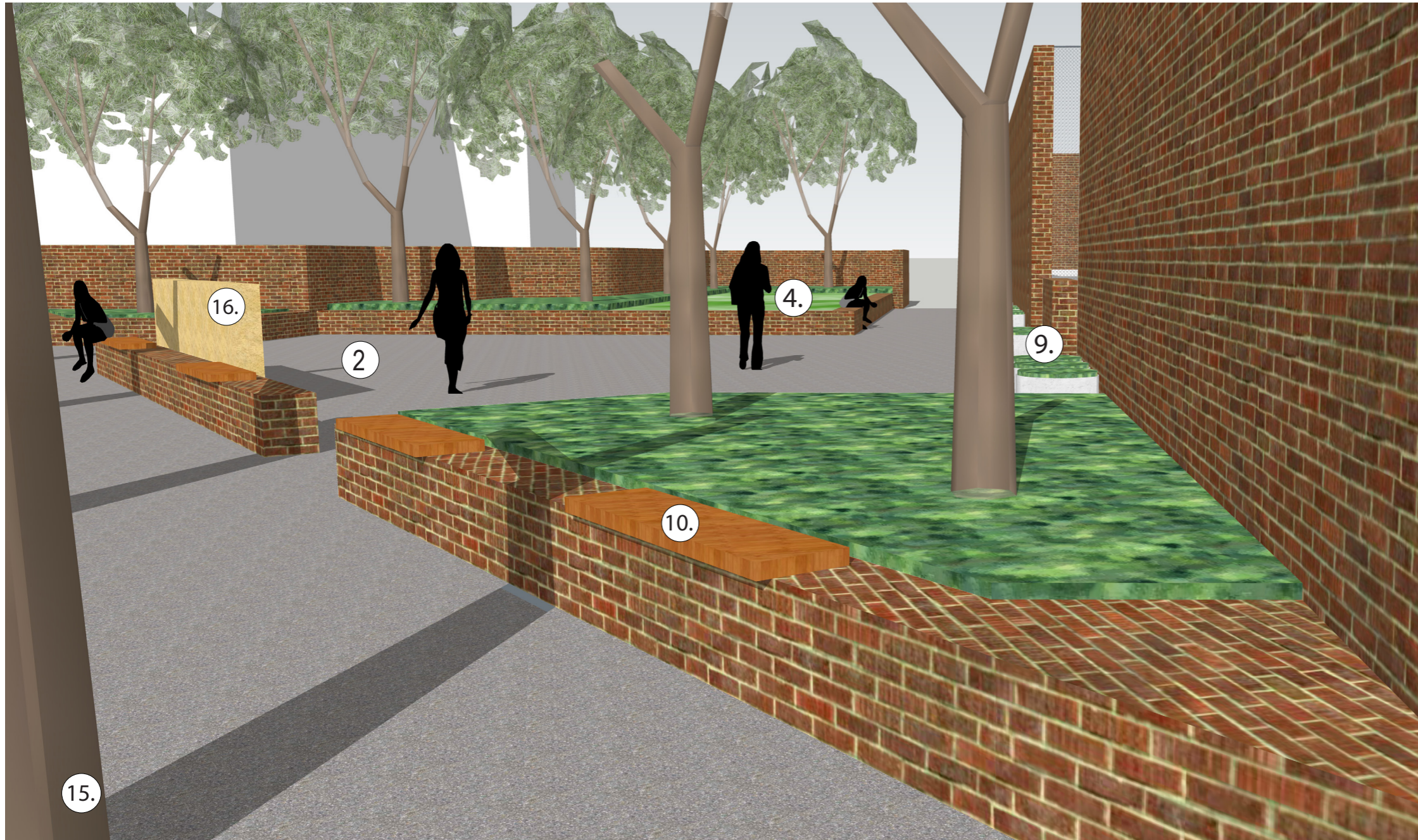
SECTION BB: Gateway Courtyard



2 • GATEWAY PLAZA ENTRY + GATEHOUSE REFURBISHMENT DESIGN EXAMPLES



2 • GATEWAY PLAZA ENTRY + GATEHOUSE REFURBISHMENT CONCEPTUAL VIEWS



3 • LIFT, STAIRS + CLIFF WALK CONTEXT + DESIGN EXAMPLES

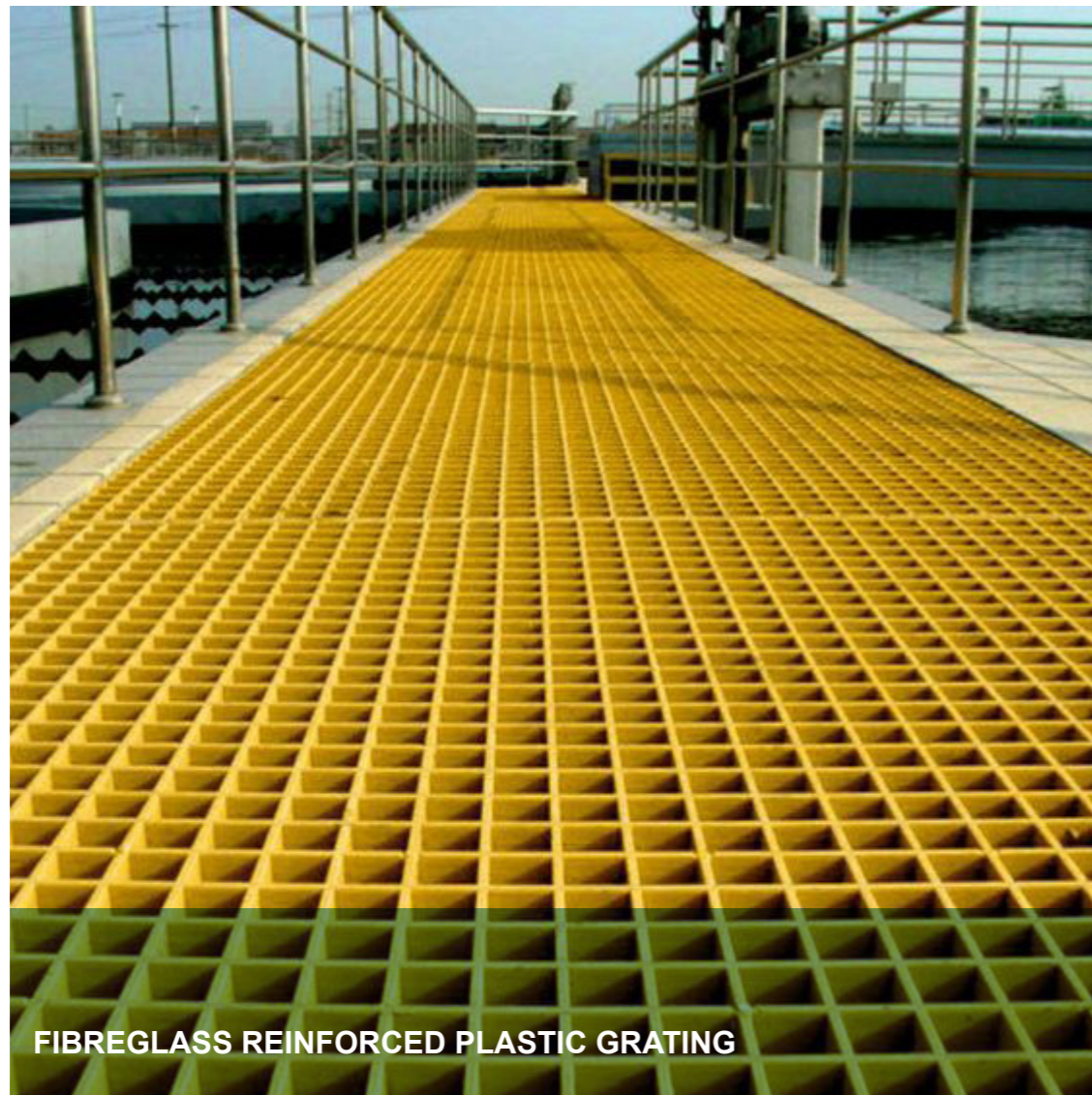


Lift, Stairs + Cliff Walk

These elements resolve the many accessibility and orientation issues of the site. The aim is to encourage visitors to arrive into the heart of the site via Arrival Square. The elements appear as a series of 'clip-on' pieces that cling to the stone cliff face and utilise an existing stone tunnel. The structure is intended as a family of simple, lightweight and expressive components that are clearly new, but draw from the honest industrial tradition of tectonic construction. Access to the Coal Stores can be provided from the cliff walk.



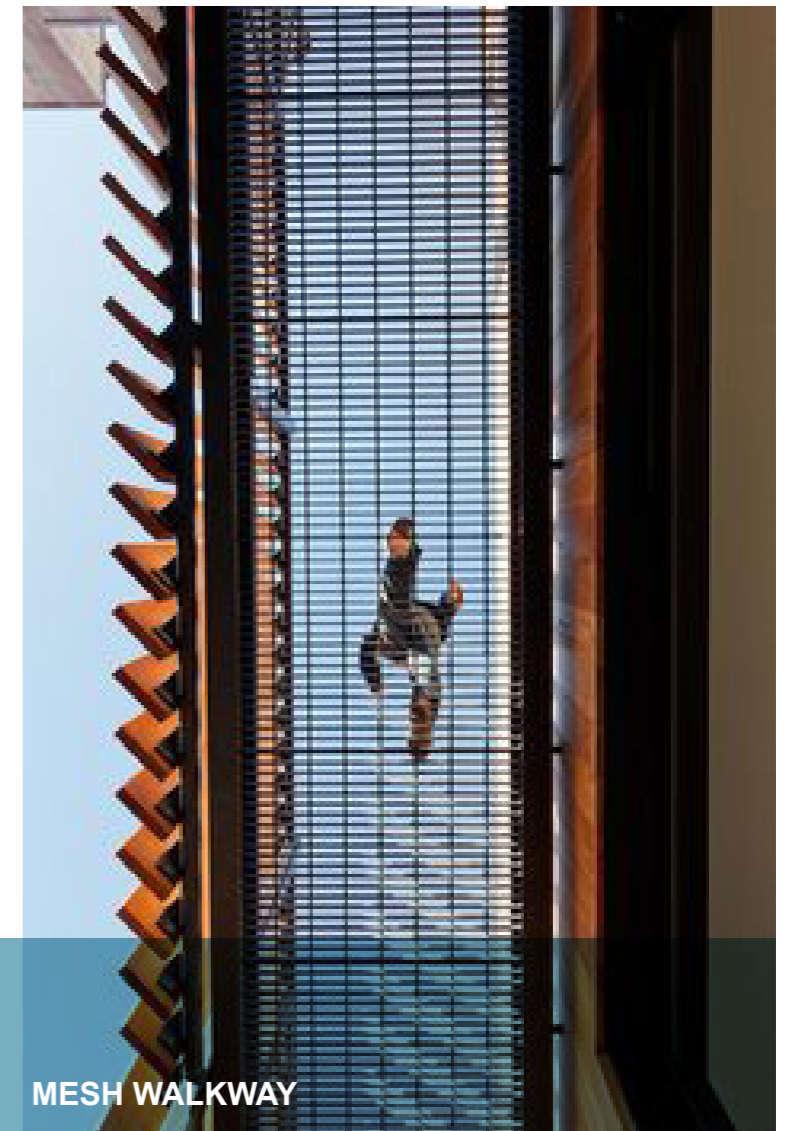
3 • LIFT, STAIRS + CLIFF WALK DESIGN EXAMPLES



FIBREGLASS REINFORCED PLASTIC GRATING

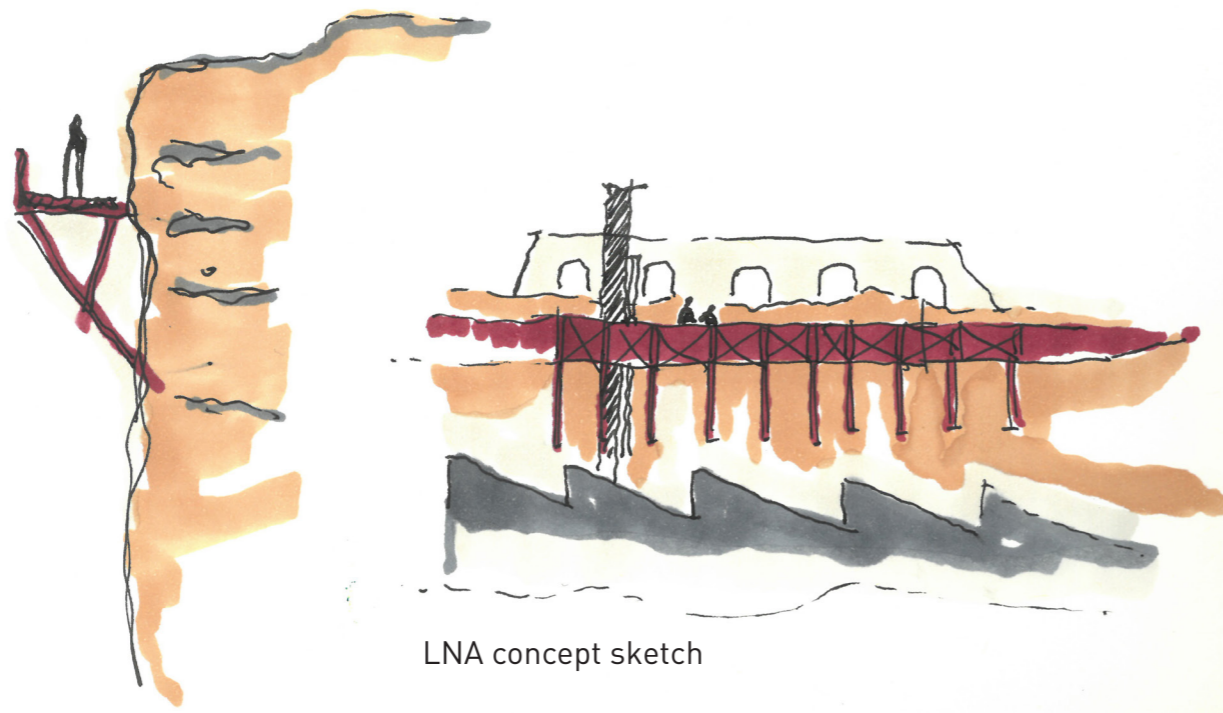


URBAN INFILL SAI PROJECT
MOON HOON
SEOUL, SOUTH KOREA

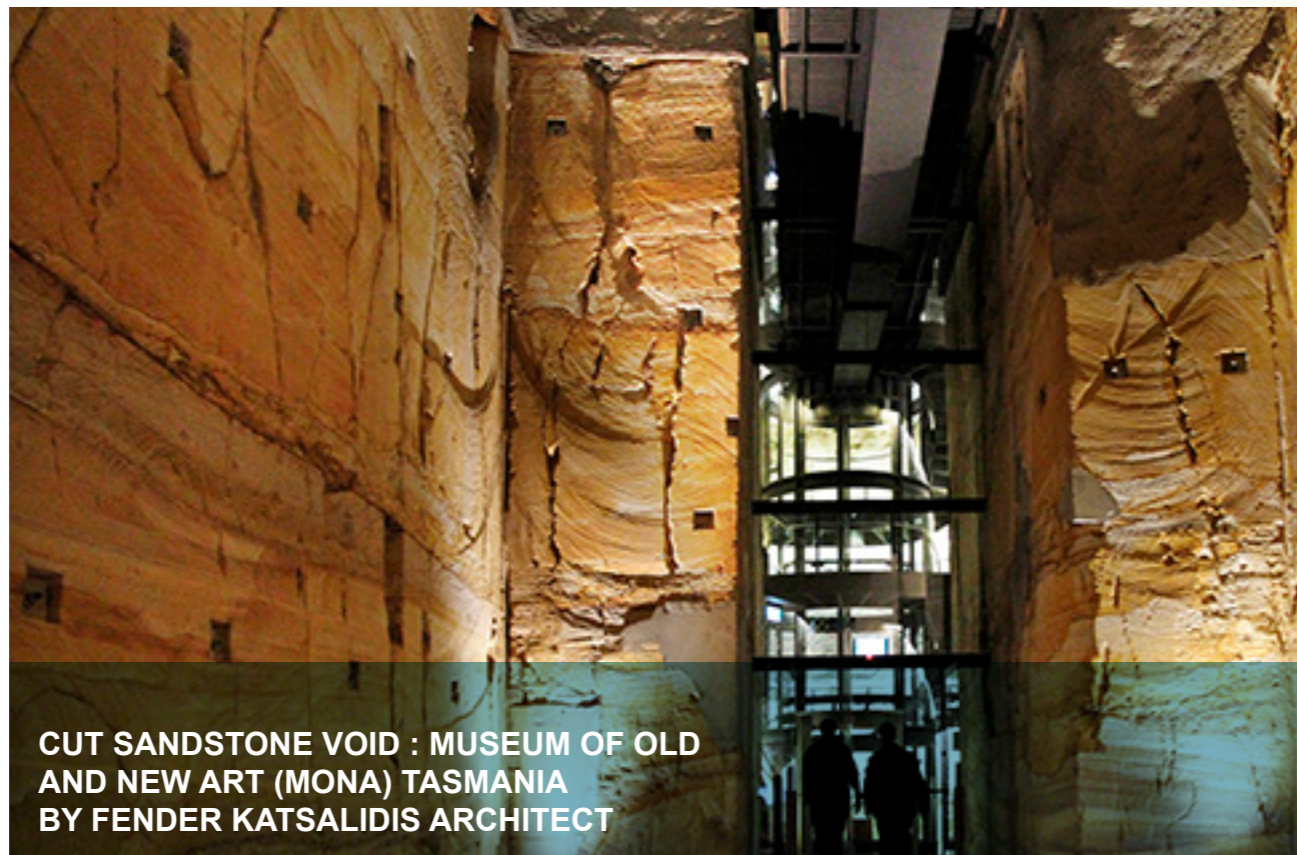


MESH WALKWAY

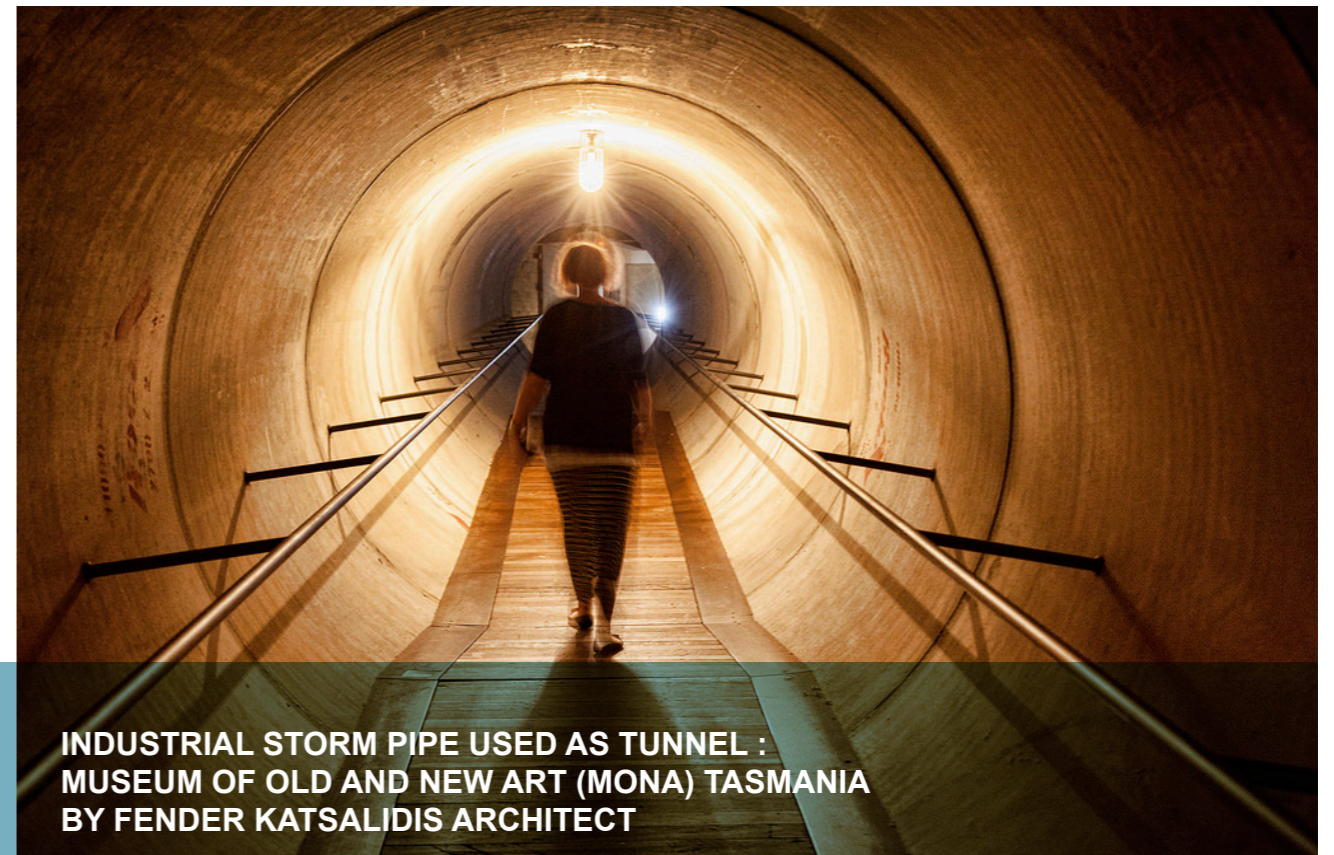
3 • LIFT, STAIRS + CLIFF WALK DESIGN EXAMPLES



LNA concept sketch

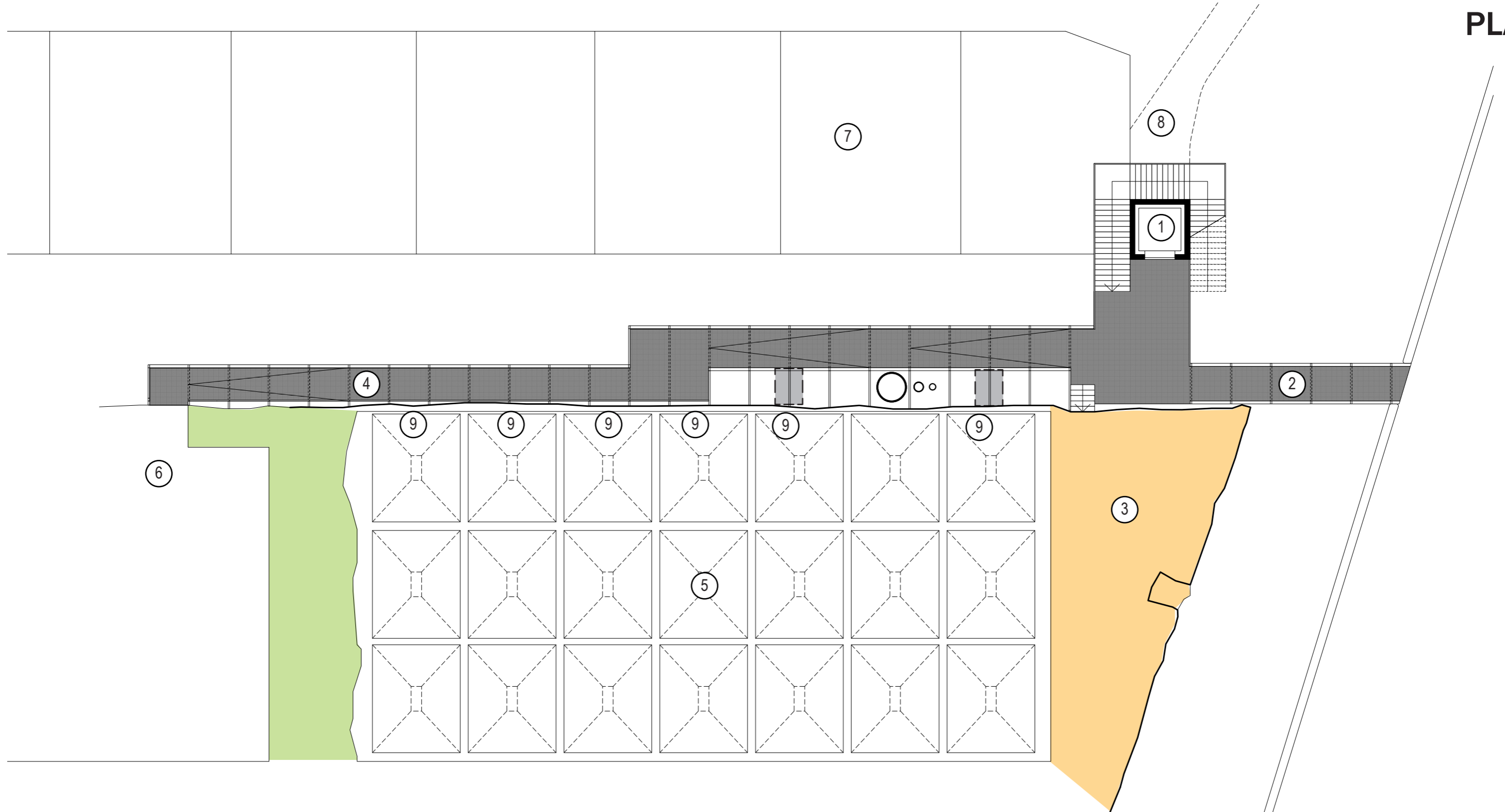


CUT SANDSTONE VOID : MUSEUM OF OLD AND NEW ART (MONA) TASMANIA
BY FENDER KATSALIDIS ARCHITECT



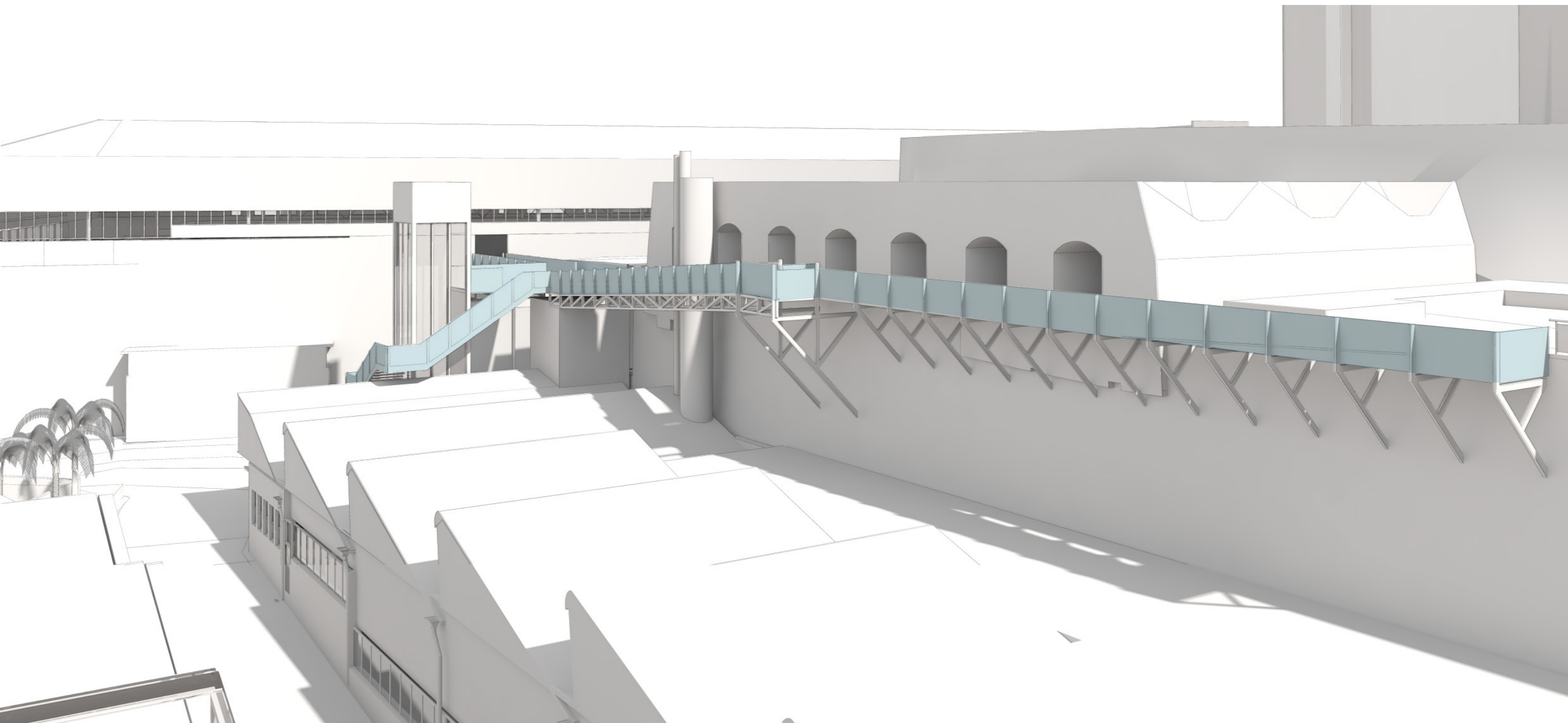
INDUSTRIAL STORM PIPE USED AS TUNNEL :
MUSEUM OF OLD AND NEW ART (MONA) TASMANIA
BY FENDER KATSALIDIS ARCHITECT

3 • LIFT, STAIRS + CLIFF WALK PLAN



- ① Lift and stairs
- ② Bridge link from RANTME Factory
- ③ Pocket park
- ④ Cliff walk access from Upper Carpark
- ⑤ Coal stores
- ⑥ Upper car park
- ⑦ Submarine school
- ⑧ Sandstone tunnel link below
- ⑨ Potential access to Coal Stores

3 • LIFT, STAIRS + CLIFF WALK CONCEPTUAL VIEW



P L A T Y P U S
33.8440° S, 151.2165° E