

# FOR LEASE

Suite B, Building 9, Crane Crescent  
Georges Heights, Headland Park, Mosman



Above: Location image.

**Set in one of Sydney's most beautiful hidden gems, this unique 21.9m<sup>2</sup> health practitioner or office space is surrounded by pristine bushland and breathtaking Harbour views.**

With ample un-metered parking and many public transport options, you'll be connected to the Mosman community and the business world but away from the hustle and bustle. Enjoy the best of both worlds, a prestigious office, creative or practitioner space in a naturally beautiful and peaceful setting.

Surrounded by natural landscapes and incredible Harbour views, this close-knit community is home to many medical professionals and health and wellbeing practitioners.

Additional on-site facilities include tennis court, kitchen, bathrooms, showers and a park pavilion.



## Net lettable area

Suite: 21.9m<sup>2</sup> (approx.)



## Rent

\$14,900 per annum + outgoings + GST

## Enquiries

For further details about this property or to organise an inspection, please contact:

**Melanie Rose, Property & Leasing Manager**

0409 697 333

[melanie.rose@harbourtrust.gov.au](mailto:melanie.rose@harbourtrust.gov.au)

**Claire Nolan, Leasing Officer**

0448 110 016

[claire.nolan@harbourtrust.gov.au](mailto:claire.nolan@harbourtrust.gov.au)

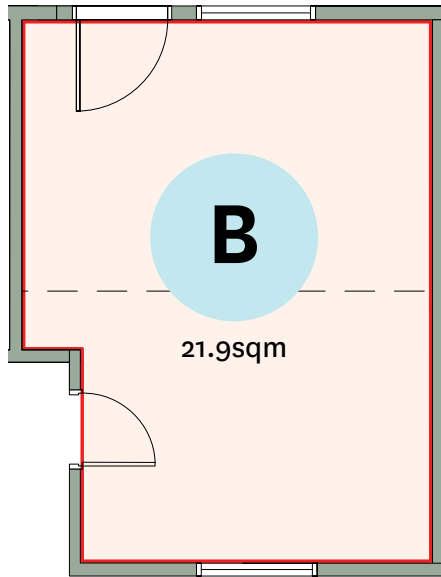
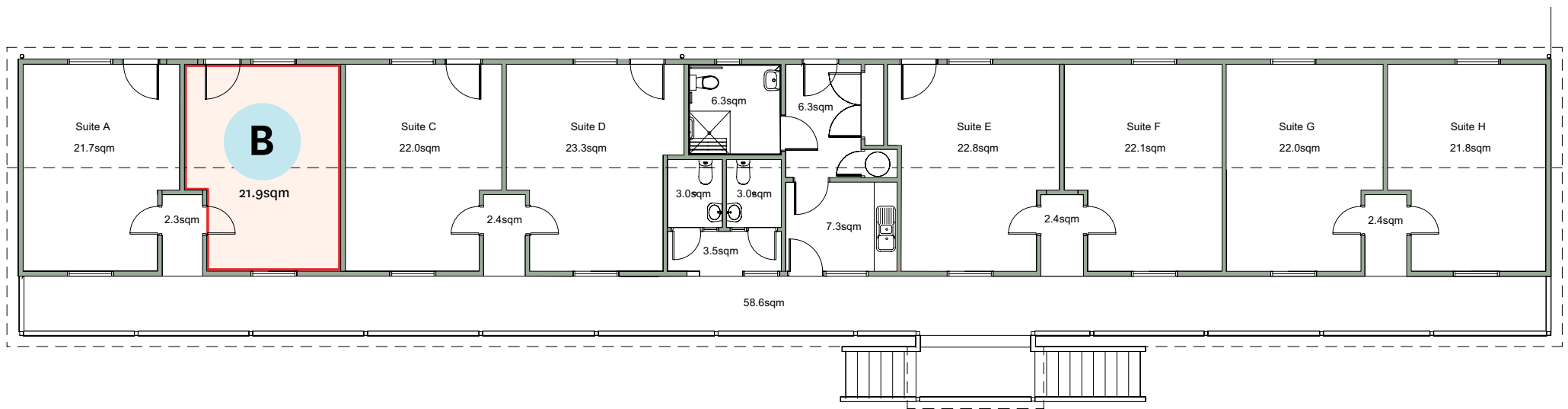
[harbourtrust.gov.au/lease](http://harbourtrust.gov.au/lease)



## Map legend

● ● ● Main walking routes

● Harbour Trust sites



## Suite B, Building 9, Crane Crescent, Georges Heights, Headland Park, Mosman

Harbour Trust



Australian Government  
Sydney Harbour Federation Trust

Cockatoo  
Island



Headland  
Park  
MOSMAN

NORTHHEAD  
— SANCTUARY MANLY —

SUB BASE  
PLATYPUS