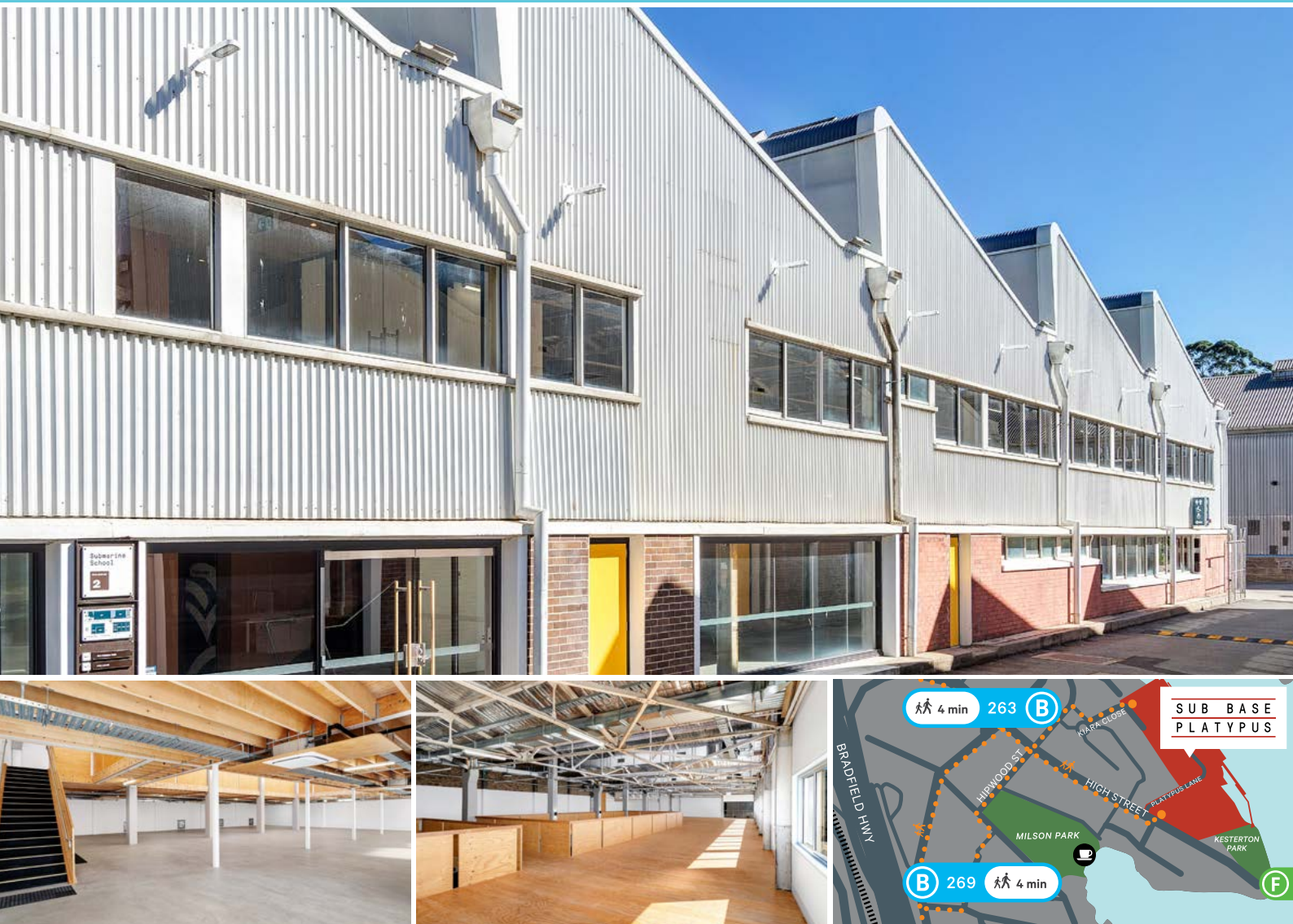


FOR LEASE

Tenancy 2.03, Building 2, 120 High Street
Sub Base Platypus, North Sydney

Harbour
Trust



Above: Location images.

Establish your business in an industrial-style, waterfront workspace at Sub Base Platypus that is guaranteed to 'wow' staff and visitors alike.

Formerly a torpedo factory, submarine base and gasworks, Sub Base Platypus is an emerging public domain, located directly on Sydney Harbour at Neutral Bay. As part of the Harbour Trust's site renewal project, historic spaces at Sub Base Platypus are being revealed and activated by a range of cultural, recreational and commercial uses.

Housed in Building 2, the historic Submarine School, Tenancy 2.03 is conveniently located near public transport links, including North Sydney Ferry Wharf (150m) and Milsons Point Train Station (800m). Plus, the warm shell is an opportunity for tenants to be creative.



Net lettable area

Suite: 912m² (approx.)



Rent

For further details, please contact the Leasing Team

Enquiries

For further details about this property or to organise an inspection, please contact:

Natasha Morran, Leasing Executive Officer

0448 110 016

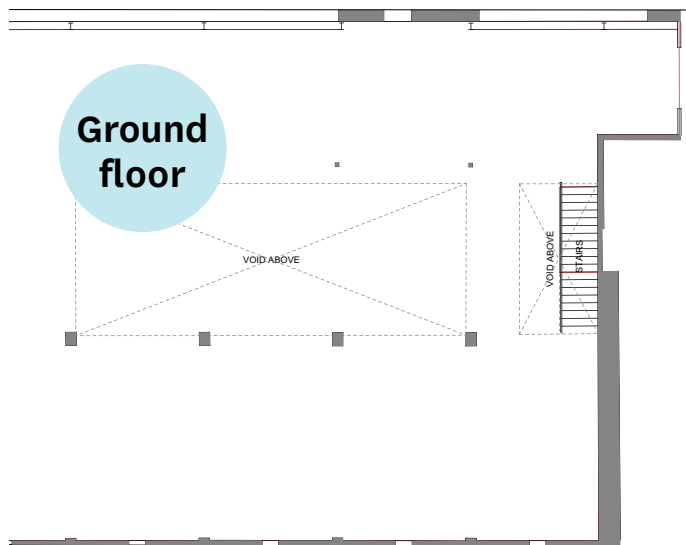
natasha.morran@harbourtrust.gov.au

harbourtrust.gov.au/lease

Map legend

● ● ● Main walking routes

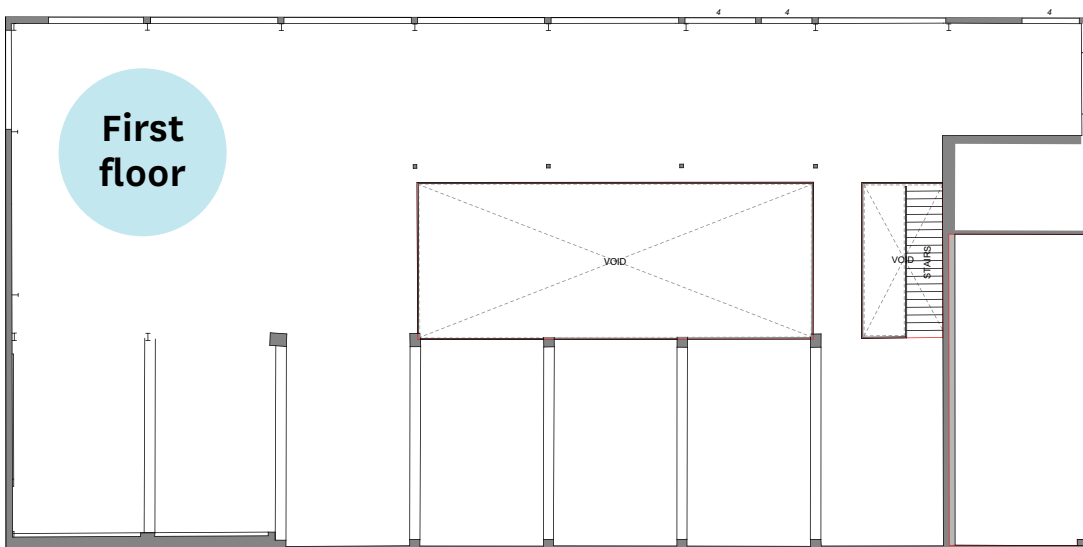
SUB BASE
PLATYPUS



Ground Floor

Whole Floor NLA: 408m² (approx.)

Whole Suite NLA: 912m² (approx.)



First Floor

Whole Floor NLA: 504m² (approx.)

Whole Suite NLA: 912m² (approx.)

Tenancy 2.03, Building 2, 120 High Street, Sub Base Platypus, North Sydney

Harbour Trust



Australian Government
Sydney Harbour Federation Trust

Cockatoo Island



Headland Park
MOSMAN

NORTHHEAD
— SANCTUARY MANLY —

SUB BASE
PLATYPUS