

# FOR LEASE

18 Chowder Bay Road  
Georges Heights, Headland Park, Mosman

Harbour  
Trust





Above: Location image.

**Surrounded by natural landscapes, combined with historical and cultural elements and incredible harbour views, this close-knit community is home to an array of businesses.**

Chowder Bay on Sydney Harbour, is a picturesque and historically significant area known for its natural beauty, waterfront views, and recreational opportunities. The area also has historical military fortifications and is a popular location for water sports.

This stunning and spacious Victorian property, the former “Sergeant Major’s Cottage”, has 7 rooms architecturally converted into office suites and is ideal for businesses such as IT, accounting or legal practice, advertising, film production or a funds management company.

 **Net lettable area**  
Suite: 159m<sup>2</sup> (approx.)

 **Rent**  
\$58,850 per annum + outgoings + GST

## Enquiries

For further details about this property or to organise an inspection, please contact:

**Melanie Rose, Property & Leasing Manager**

0409 697 333

[melanie.rose@harbourtrust.gov.au](mailto:melanie.rose@harbourtrust.gov.au)

**Claire Nolan, Leasing Officer**

0448 110 016

[claire.nolan@harbourtrust.gov.au](mailto:claire.nolan@harbourtrust.gov.au)

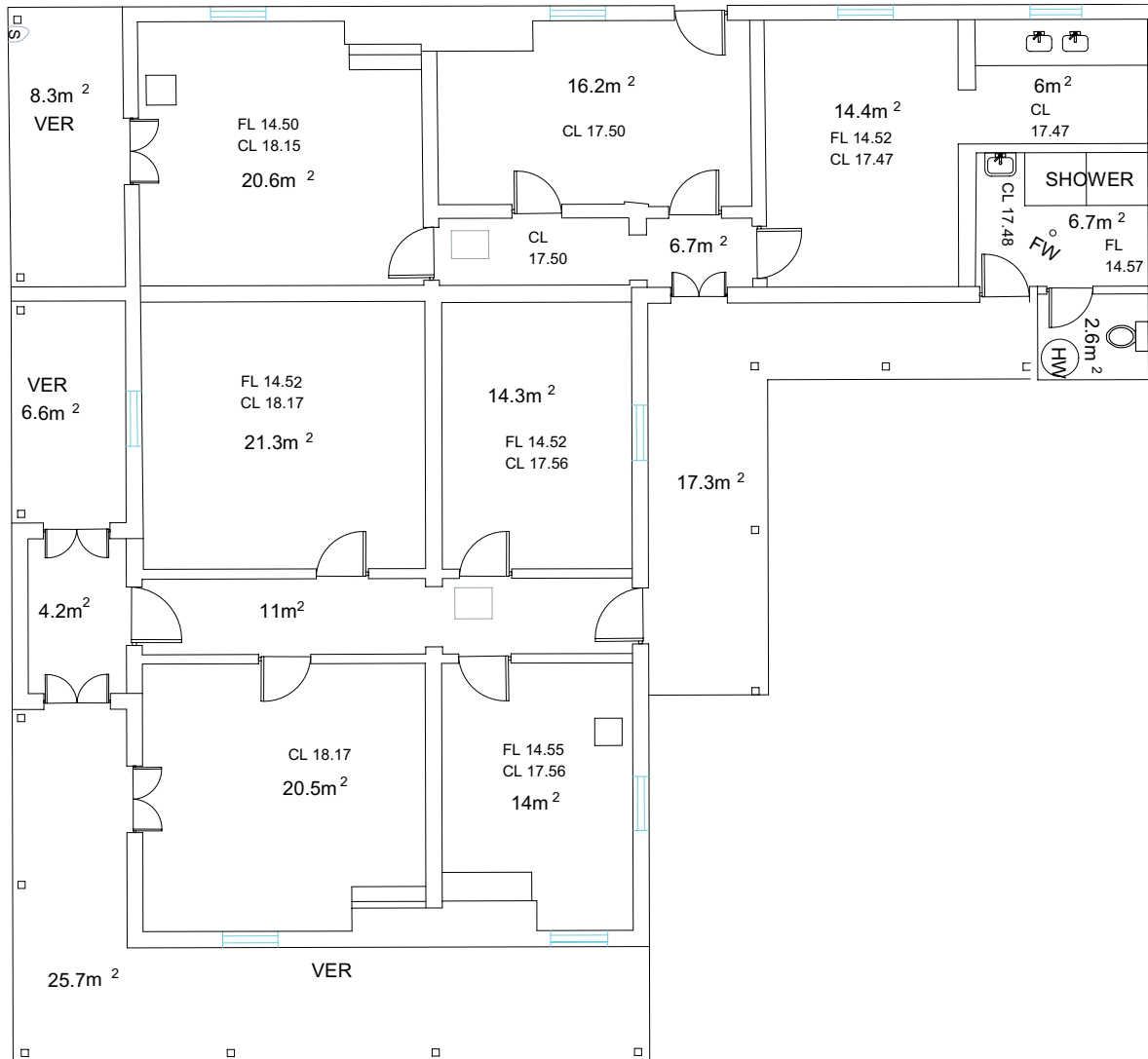
[harbourtrust.gov.au/lease](http://harbourtrust.gov.au/lease)

### Map legend

● ● ● Main walking routes

● Harbour Trust sites





18 Chowder Bay Road, Georges Heights, Headland Park, Mosman

Harbour Trust



Australian Government  
Sydney Harbour Federation Trust

Cockatoo  
Island



Headland  
Park  
MOSMAN

NORTHHEAD  
— SANCTUARY MANLY —

SUB BASE  
PLATYPUS