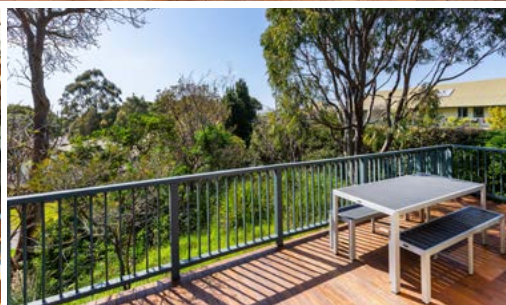


# FOR LEASE

Building 15, Best Ave  
Georges Heights, Headland Park, Mosman

Harbour  
Trust



Above: Location images.

## Light-filled landmark building with parkland outlook


Position your business within one of Sydney's most stunning urban parklands set in the prestigious Georges Heights precinct at Headland Park, Mosman.


A premium commercial space in the heart of Headland Park, this outstanding stand-alone heritage building offers 93m<sup>2</sup> (approx) of flexible, light-filled space with exceptional natural surroundings and commanding local exposure.

Set within 40 hectares of landscaped parkland, surrounded by a thriving community of diverse businesses this location is designed to inspire. It offers a tranquil environment for forward-thinking businesses wanting more than an office space but a place. Ideal for businesses seeking prestige, privacy and access to Sydney's most desirable clientele.

This is more than a workspace, it tells your story.

Available 2026.

 **Net lettable area**  
Suite: 93m<sup>2</sup> (approx.)

 **Rent**  
\$54,924 per annum + outgoings + GST

## Enquiries

For further details about this property or to organise an inspection, please contact:

**James Maxwell, Leasing Executive**

0448 110 016

[james.maxwell@harbourtrust.gov.au](mailto:james.maxwell@harbourtrust.gov.au)

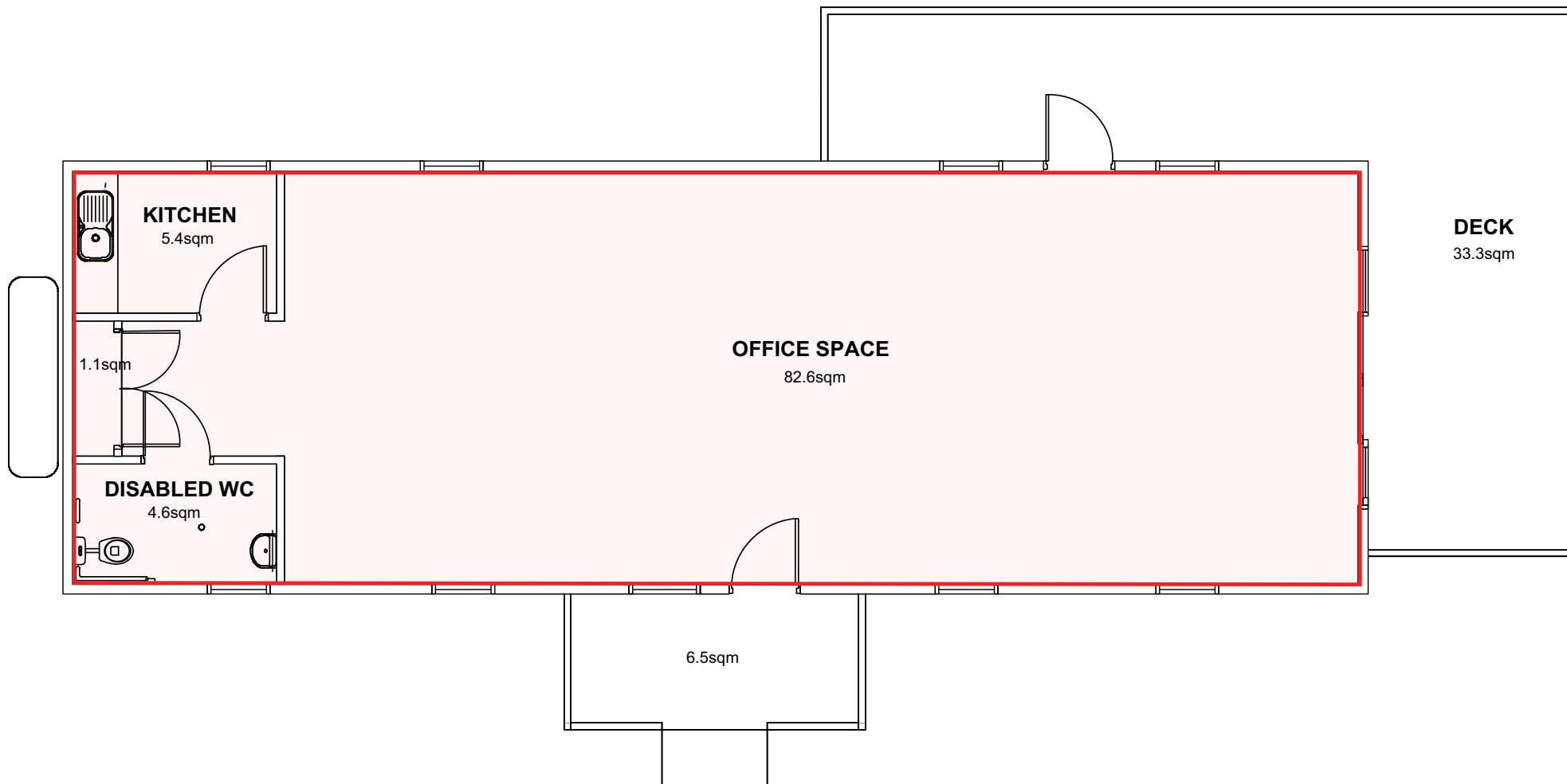
[harbourtrust.gov.au/lease](http://harbourtrust.gov.au/lease)



### Map legend

● ● ● Main walking routes

● Harbour Trust sites



Building 15, Best Ave, Georges Heights, Headland Park, Mosman