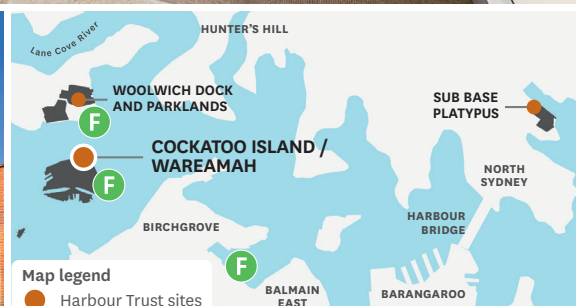


FOR LEASE

Suite C, Building 30
Cockatoo Island, Sydney Harbour




Above: Location image.

Beautifully refurbished and ready for your business to move in, this is a rarely-offered opportunity in a jaw-dropping harbour location.

There's nowhere in Sydney quite like Cockatoo Island / Wareamah. In the past it played a pivotal role in Australia's convict and maritime history. Today, the regular ferry services from Circular Quay stops right in front of this waterfront heritage office. It's so close to the city, and yet so removed from the hustle and bustle.

Completed in 1948, Building 30 was the key Administrative Building within Cockatoo Island's complex of dockyard workshops. It originally housed the General Manager's Office and served as the official gateway for visitors to the Dockyard.

Ideal for drawing inspiration from the island's history as well as its tranquillity today, you'll be right at home with neighbouring businesses including architects, hydraulic designers and the Cockatoo Island Marine Centre.

 **Net lettable area**
Suite: 40m² (approx.)

 **Rent**
\$19,900 per annum + outgoings + GST

Enquiries

For further details about this property or to organise an inspection, please contact:

Melanie Rose, Property & Leasing Manager

0409 697 333

melanie.rose@harbourtrust.gov.au

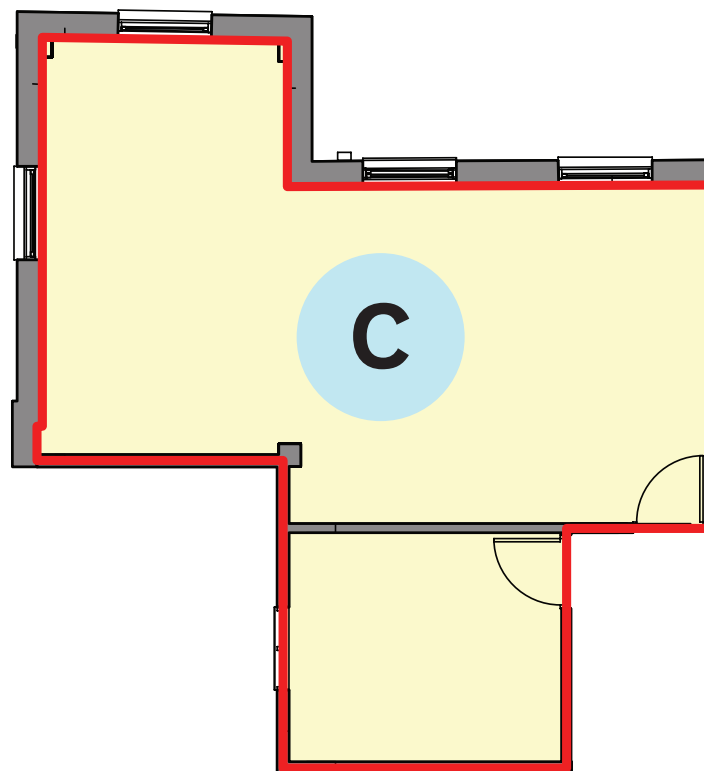
Claire Nolan, Leasing Officer

0448 110 016

claire.nolan@harbourtrust.gov.au

harbourtrust.gov.au/lease





Harbour Trust

 Cockatoo Island

NORTHHEAD
— SANCTUARY MANLY —

SUB BASE

PLATYPUS®