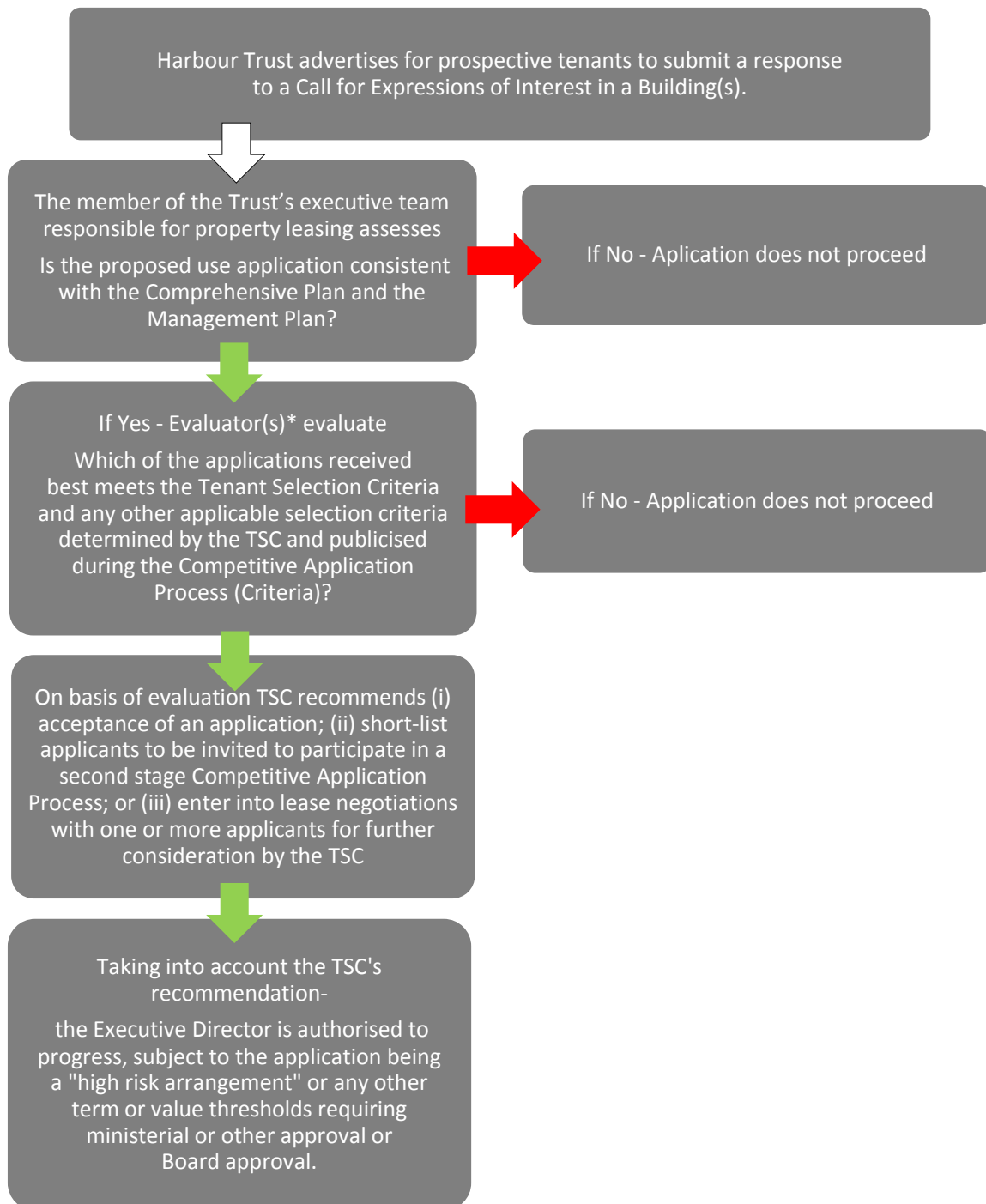




Creating extraordinary places on the world's best harbour.

SYDNEY HARBOUR FEDERATION TRUST - FLOW CHART PROCESS FOR THE CONDUCT OF A COMPETITIVE APPLICATION PROCESS UNDER THE DRAFT HARBOUR TRUST LEASING POLICY 2020



*Note: The "Evaluator(s)" may be (i) Each member of the TSC individually; (ii) the members of the TSC acting as a group; or (iii) a member of Trust staff nominated by a member of the TSC under the oversight of that member of the TSC.