

# FOR LEASE

Suite B, Building 9, 1110 Middle Head Road  
Middle Head, Headland Park, Mosman



Above: Location image.

Originally constructed as barracks during the Second World War, this exclusive complex later housed accommodation and training facilities for the Australian School of Pacific Administration (ASOPA). Now meticulously restored and upgraded, these buildings blend modern amenities with contemporary design, offering an exceptional space for your business.

The 59m<sup>2</sup> area is ideal for office, retail or showroom use. It is fully air-conditioned, featuring polished floorboards for added comfort. You'll enjoy easy access to nearby cafes and restaurants, with direct bus connections to Mosman Bay Wharf. Additional amenities include a short walk to Obelisk and Cobbler beaches, along with on-site facilities such as a tennis court, kitchen, bathrooms, showers and a park pavilion.

This is a unique opportunity to establish your business in a vibrant, eco-friendly setting, with revenues supporting the conservation of public lands around Sydney Harbour, managed by the Sydney Harbour Federation Trust.

## Net lettable area

Suite: 59m<sup>2</sup> (approx.)

## Rent

\$33,512 per annum + outgoings + GST

## Enquiries

For further details about this property or to organise an inspection, please contact:

**James Maxwell, Property & Leasing Manager**

0448 110 016

[james.maxwell@harbourtrust.gov.au](mailto:james.maxwell@harbourtrust.gov.au)

**Claire Nolan, Leasing Executive**

0417 297 207

[claire.nolan@harbourtrust.gov.au](mailto:claire.nolan@harbourtrust.gov.au)

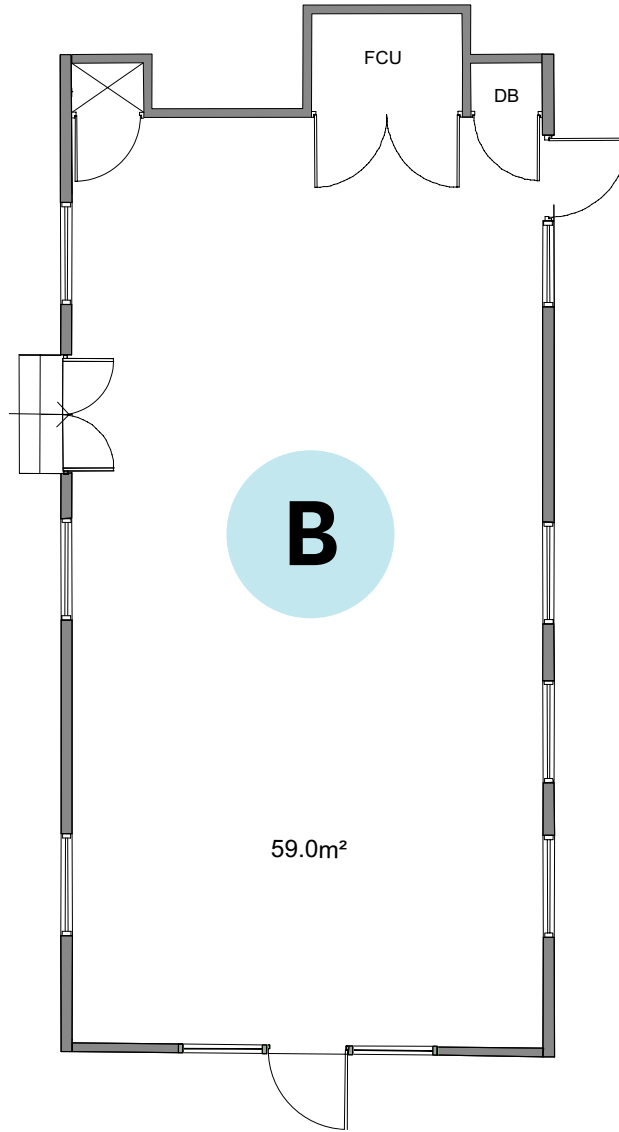
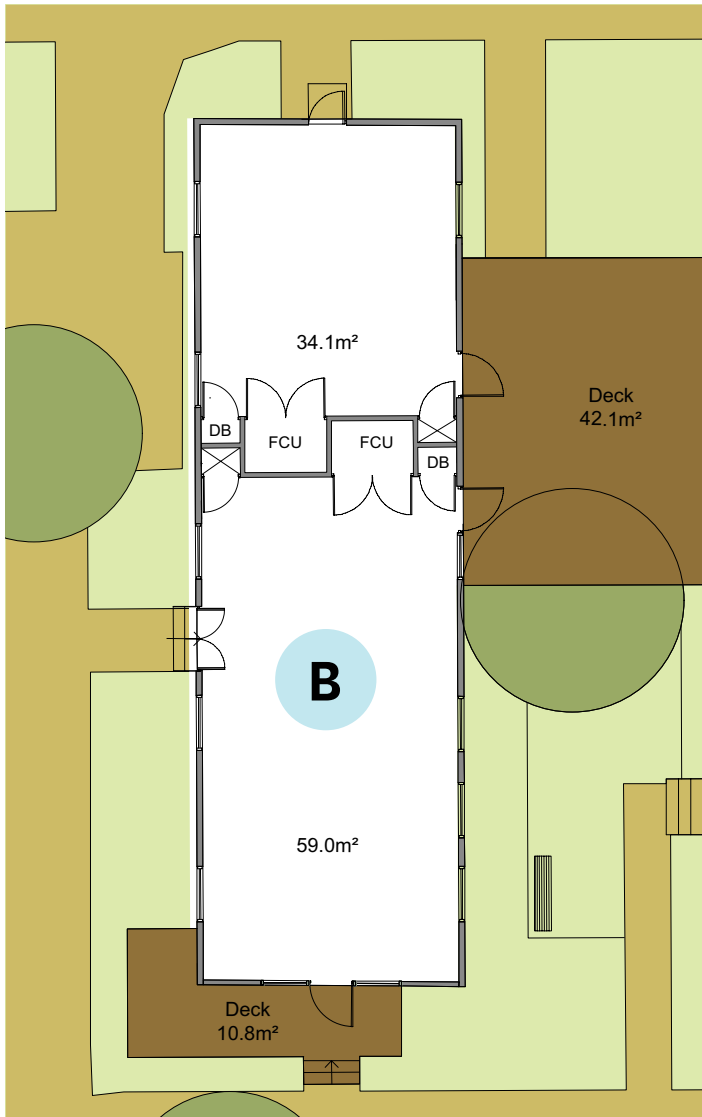
[harbourtrust.gov.au/lease](http://harbourtrust.gov.au/lease)

## Map legend

● ● ● Main walking routes

● Harbour Trust sites





**Legend**  
 FCU: Fire Control Unit  
 DB: Distribution Board

Suite B, Building 9, 1110 Middle Head Road, Middle Head, Headland Park, Mosman