

# FOR LEASE

Suite D, Building 9, Crane Crescent  
Georges Heights, Headland Park, Mosman

Harbour  
Trust



Above: Location image.



**Fabulous health practitioner/office space. Nestled in Parklands by Sydney Harbour with ample parking. Only 8km to Sydney CBD.**

Enjoy:

- 23.3m<sup>2</sup> area – ideal for office or medical/health practitioner
- Heating
- Phone and internet enabled
- Fibre optic connections compatibility
- Natural light
- Carpet throughout
- Cross ventilation
- Additional on-site shared facilities; kitchen, bathrooms, showers and tennis court.



## Net lettable area

Suite: 23.3m<sup>2</sup> (approx.)



## Rent

\$16,132.67 per annum + outgoings + GST

## Enquiries

For further details about this property or to organise an inspection, please contact:

**Melanie Rose, Property & Leasing Manager**

0409 697 333

[melanie.rose@harbourtrust.gov.au](mailto:melanie.rose@harbourtrust.gov.au)

**Claire Nolan, Leasing Officer**

0448 110 016

[claire.nolan@harbourtrust.gov.au](mailto:claire.nolan@harbourtrust.gov.au)

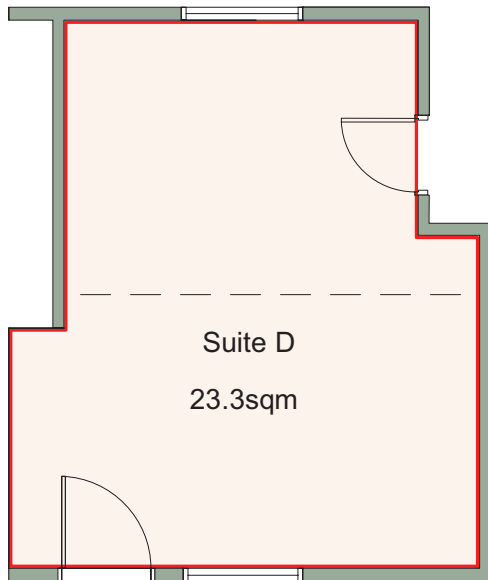
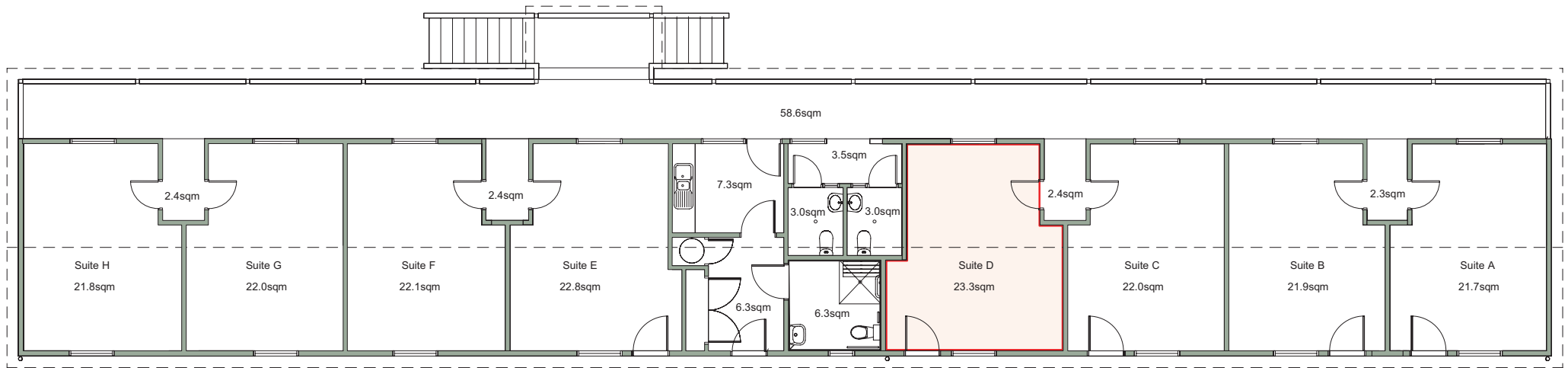
[harbourtrust.gov.au/lease](http://harbourtrust.gov.au/lease)



## Map legend

• • • Main walking routes

● Harbour Trust sites



## Suite D, Building 9, Crane Crescent, Georges Heights, Headland Park, Mosman