

FOR LEASE

Suite B, Building 9, 1110 Middle Head Road
Middle Head, Headland Park, Mosman

Harbour
Trust




Above: Location image.

Originally constructed as barracks during the Second World War, this exclusive complex later housed accommodation and training facilities for the Australian School of Pacific Administration (ASOPA). Now meticulously restored and upgraded, these buildings blend modern amenities with contemporary design, offering an exceptional space for your business.

The 59m² area is ideal for office, retail or showroom use. It is fully air-conditioned, featuring polished floorboards for added comfort. You'll enjoy easy access to nearby cafes and restaurants, with direct bus connections to Mosman Bay Wharf. Additional amenities include a short walk to Obelisk and Cobbler beaches, along with on-site facilities such as a tennis court, kitchen, bathrooms, showers and a park pavilion.

This is a unique opportunity to establish your business in a vibrant, eco-friendly setting, with revenues supporting the conservation of public lands around Sydney Harbour, managed by the Sydney Harbour Federation Trust.

 **Net lettable area**
Suite: 59m² (approx.)

 **Rent**
\$32,450 per annum + outgoings + GST

Enquiries

For further details about this property or to organise an inspection, please contact:

Melanie Rose, Property & Leasing Manager

0409 697 333

melanie.rose@harbourtrust.gov.au

Claire Nolan, Leasing Officer

0448 110 016

claire.nolan@harbourtrust.gov.au

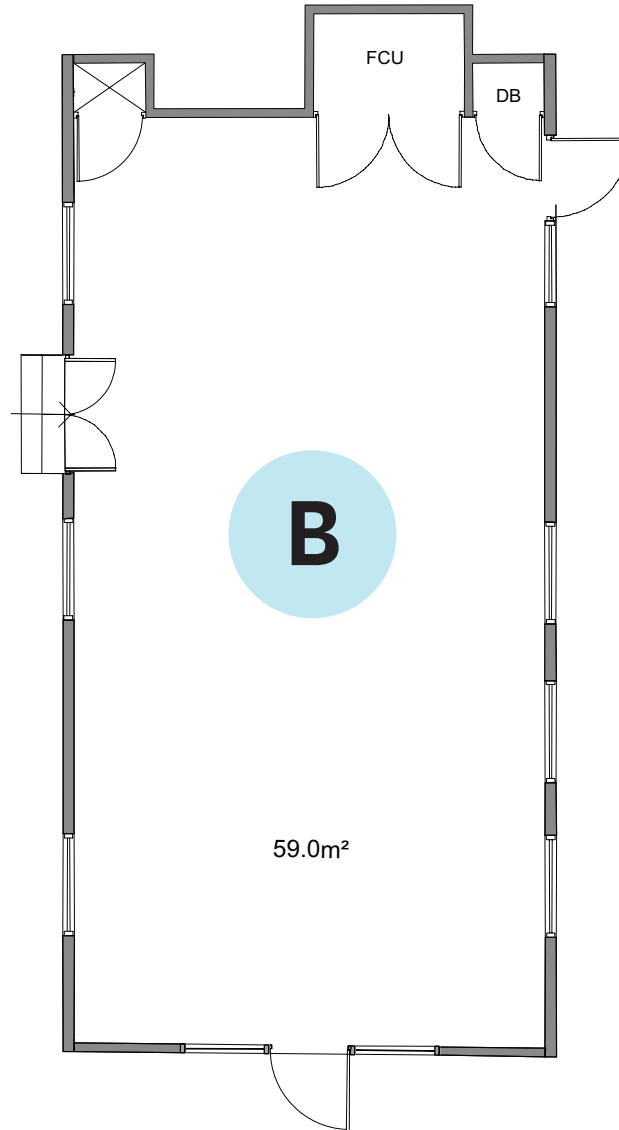
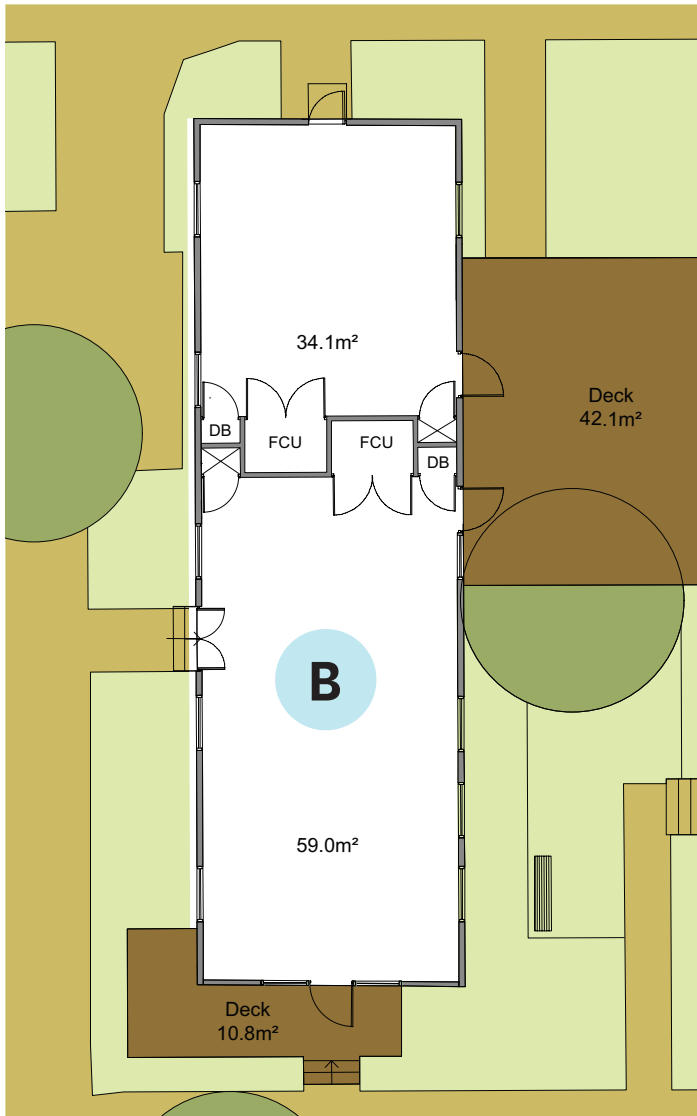
harbourtrust.gov.au/lease

Map legend

● ● ● Main walking routes

● Harbour Trust sites





Legend

FCU: Fire Control Unit
DB: Distribution Board

Suite B, Building 9, 1110 Middle Head Road, Middle Head, Headland Park, Mosman