

FOR LEASE

Suite D, Building 9, Crane Crescent
Georges Heights, Headland Park, Mosman

Harbour
Trust



Above: Location image.



Fabulous health practitioner/office space. Nestled in Parklands by Sydney Harbour with ample parking. Only 8km to Sydney CBD.

Enjoy:

- 23.3m² area – ideal for office or medical/health practitioner
- Heating
- Phone and internet enabled
- Fibre optic connections compatibility
- Natural light
- Carpet throughout
- Cross ventilation
- Additional on-site shared facilities; kitchen, bathrooms, showers and tennis court.



Net lettable area

Suite: 23.3m² (approx.)



Rent

\$15,662.76 per annum + outgoings + GST

Enquiries

For further details about this property or to organise an inspection, please contact:

Melanie Rose, Property & Leasing Manager

0409 697 333

melanie.rose@harbourtrust.gov.au

Claire Nolan, Leasing Officer

0448 110 016

claire.nolan@harbourtrust.gov.au

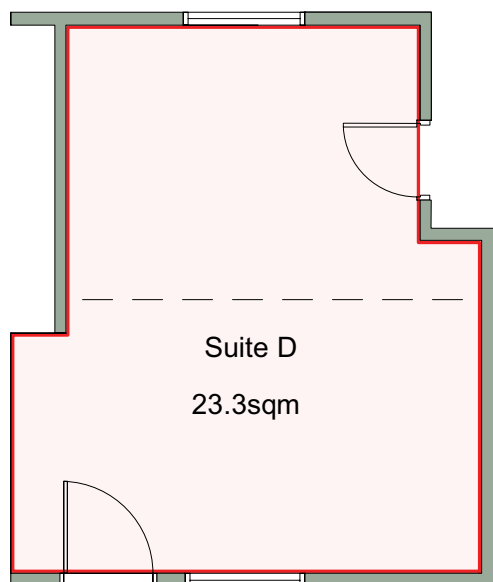
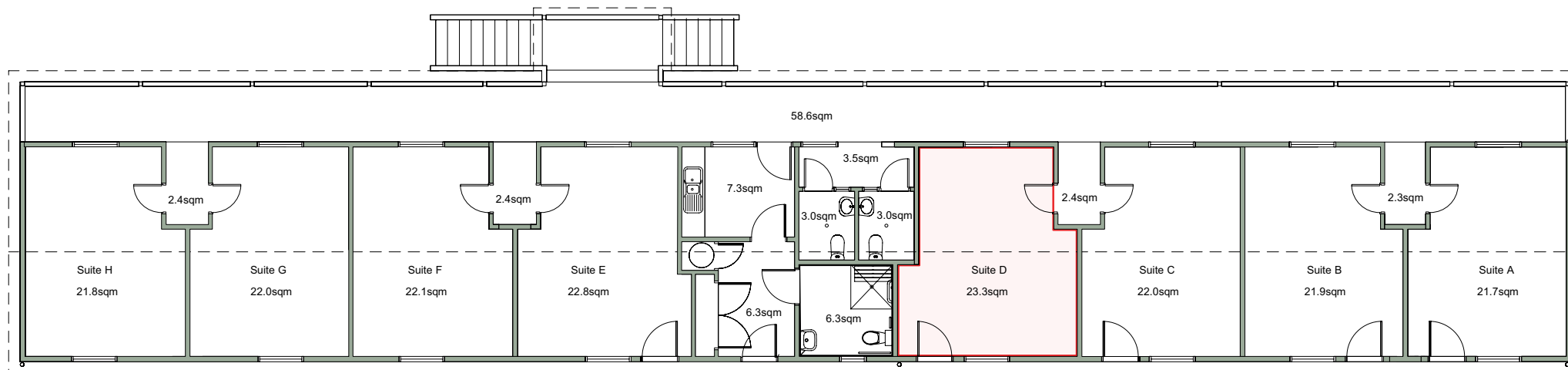
harbourtrust.gov.au/lease

Map legend

• • • Main walking routes

● Harbour Trust sites





Suite D, Building 9, Crane Crescent, Georges Heights, Headland Park, Mosman