

# FOR LEASE

Suite B2, Building 30 Suakin Drive  
Georges Heights, Headland Park, Mosman

Harbour  
Trust



Above: Location image.

**This 31.78m<sup>2</sup> office, creative or practitioner space is set in a vibrant, eco-friendly environment nestled in Headland Park, Mosman. This property boasts polished floorboards, air conditioning and an abundance of natural light.**

Surrounded by natural landscapes and incredible harbour views, this close-knit community is home to many professional and creative businesses as well as health and wellbeing practitioners.

Embrace a healthy work-life balance in this stunning location. Start your mornings with a bush walk on the grounds, a swim at Balmoral Beach or a fresh juice or coffee at Frenchy's or Middle Head cafes.

Additional on-site amenities include shared showers, a tennis court, parklands and glistening harbour views. Free on-site parking is available and vibrant Mosman Village is just a stone's throw away.



## Net lettable area

Suite: 31.78m<sup>2</sup> (approx.)



## Rent

\$16,950 per annum + outgoings + GST

## Enquiries

For further details about this property or to organise an inspection, please contact:

**Melanie Rose, Property & Leasing Manager**

0409 697 333

[melanie.rose@harbourtrust.gov.au](mailto:melanie.rose@harbourtrust.gov.au)

**Claire Nolan, Leasing Officer**

0448 110 016

[claire.nolan@harbourtrust.gov.au](mailto:claire.nolan@harbourtrust.gov.au)

[harbourtrust.gov.au/lease](http://harbourtrust.gov.au/lease)

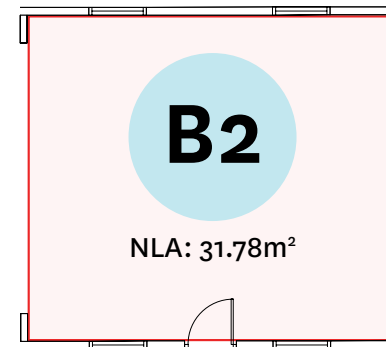
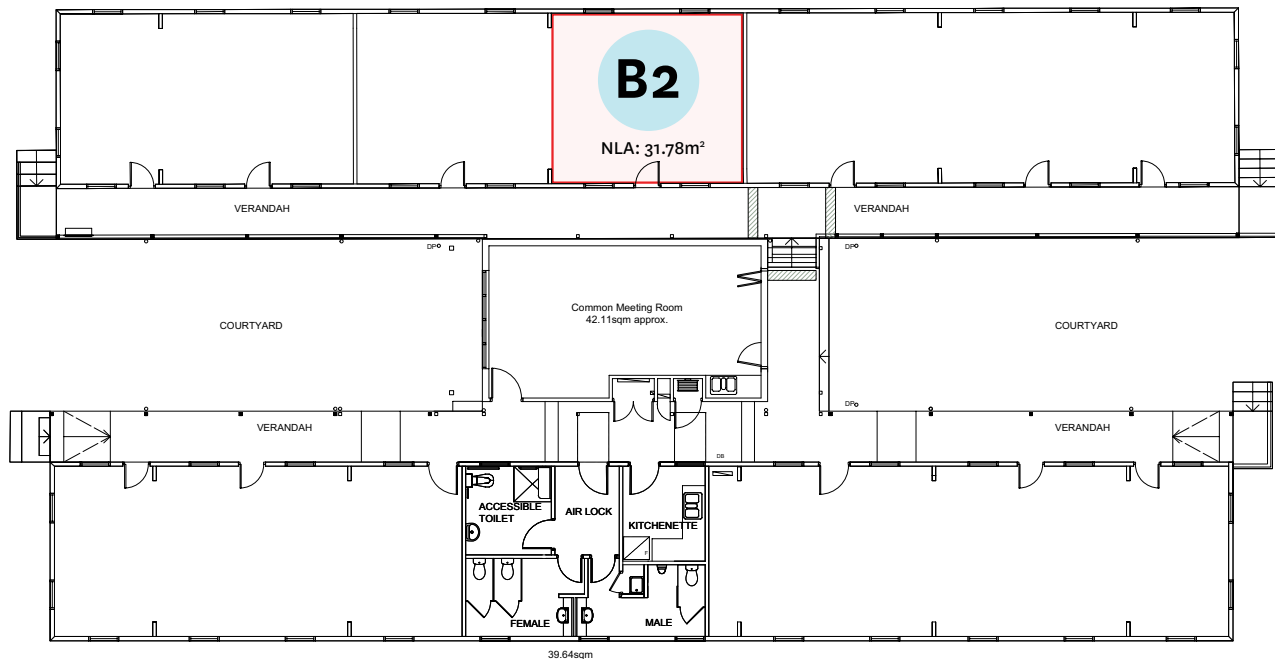
## Map legend

● ● ● Main walking routes

● Harbour Trust sites



**Headland  
Park** MOSMAN



## Suite B2, Building 30 Suakin Drive, Georges Heights, Headland Park, Mosman

Harbour Trust



Australian Government  
Sydney Harbour Federation Trust



Cockatoo  
Island



Headland  
Park  
MOSMAN



SUB BASE  
PLATYPUS