

Visit and Stay on Cockatoo Island / Wareamah

UNESCO World Heritage listed Cockatoo Island / Wareamah has a fascinating past to discover and a unique present-day personality to explore.



Dark Past Tour



Convict Precinct

Welcome to Cockatoo Island / Wareamah

We acknowledge and respect the Traditional Custodians and Owners of the lands and waters of Sydney Harbour. Cockatoo Island / Wareamah connects to the waterways and homelands of the Wallumedegal, Wangal, Cammeraygal and Gadigal Peoples.

Cockatoo Island / Wareamah, Sydney Harbour is an extraordinary destination protected and managed by the Harbour Trust. In 2010, the convict penal establishment was inscribed on the UNESCO World Heritage List, together with ten other historic convict sites in Australia.

In addition to heritage accommodation, we offer the world's first urban waterfront campground, with unbeatable views of the harbour as well as picnic spots, BBQ facilities and cafés.

Plus, there are plenty of activities for history buffs and adventure-seekers of all ages. So, what are you waiting for? Jump on a ferry and escape to Cockatoo Island / Wareamah!

Cockatoo Island / Wareamah Highlights

Transport

Catching a public ferry is the easiest way to visit us. The F3 and F8 ferry routes provide regular daily services, connecting Cockatoo Island / Wareamah with Circular Quay, Barangaroo and Parramatta, as well as many other wharves along the Parramatta River. You'll find the latest information, including prices, timetables and ticket retailers at transportnsw.info.

You can also visit Cockatoo Island / Wareamah by water taxi, private boat or kayak.

School camping

Owing to its layered history, Cockatoo Island / Wareamah is the perfect camping spot for school groups. Our curriculum education programs provide students with opportunities to participate in outdoor activities and engage with the living history of the island.

Stop, indulge, unwind

With its panoramic harbour views, tranquil picnic spots and waterfront cafés, Cockatoo Island / Wareamah is an ideal rest and relaxation setting, removed from the hustle and bustle of city life.

Marina Café & Bar

Open daily (licensed café)

A family-friendly environment serving wraps, salads, cakes and a range of snacks, along with coffee, tea and cold drinks. (Map ref 3E)

Société Overboard

Open daily (licensed café)

Try a great range of burgers, fish and chips, and mezze plates. BBQ packs are also available for campers to order. (Map ref 7H)

What's on

Dark Past Tour (all ages)

Secrets. Scandals. Skeletons. Cockatoo Island has its fair share of all three. Find out for yourself with our intrigue-filled Dark Past Tour. As you visit iconic landmarks, our guide will blend history with mystery and captivate your imagination.

Duration: 90 minutes

When: Saturdays

Suitable for: Overnight groups and families with kids*.

*Content may not be suitable for very young children.

Ghost Tour (18+)

As the witching hour approaches, journey into Cockatoo Island's supernatural realm with our popular Ghost Tour. We'll share macabre true stories and hair-raising paranormal tales as you search for ghosts and explore historic buildings rarely open to the public.

Duration: 120 minutes

When: Fridays and Saturdays

Suitable for: Adults

Overnight Fright (expanded experience)

Need a stronger fright fix? Upgrade to 'Overnight Fright'! When the Ghost Tour concludes, we'll screen a horror film in our Convict Cinema and you'll spend the night in our campground.

Audio Tour (all ages)

Featuring an informative narrator, immersive sound effects and archival interviews, our self-guided Audio Tour paints a vivid picture of the island's storied convict and maritime eras. It also looks at the enduring significance of the island for First Nations Peoples.

Duration: Approximately 90 minutes

When: Every day

Note: Audio Tour handset available to rent daily from Visitor Centre.

Private Group Tours

We accept private group bookings for our popular Ghost and Dark Past Tours. **PLUS:** A range of tours are EXCLUSIVELY available for private bookings including our Convict Precinct Tour.

Duration: Variable

When: Monday to Sunday

Note: Minimum booking 10 people.

To embark on a private tour with your group, visit: cockatooisland.gov.au/request-group-tour

Visit cockatooisland.gov.au to find out what's on and how to book.



Heritage Houses located on the Upper Island



Dog-Leg Tunnel



Beam Benders — Remnants of a 1920 Hugh Smith Plate Bending Machine.

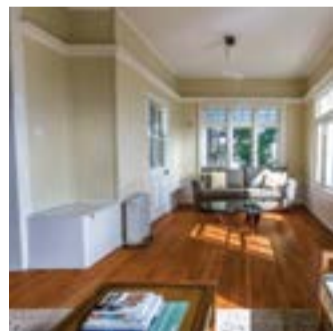
The Harbour Trust protects and manages a network of heritage sites on Sydney Harbour.

In addition to Cockatoo Island / Wareamah, our portfolio includes North Head Sanctuary (Manly), Headland Park (Mosman), Sub Base Platypus (North Sydney) and Macquarie Lightstation (Vaucluse).

Enjoy these distinctive urban foreshore parklands — they're free for everyone to visit all year round.

Heritage accommodation

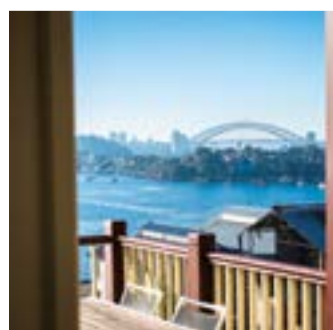
The only harbour island where you can stay overnight, Cockatoo Island / Wareamah offers unique accommodation options, suitable for all budgets and tastes. **Check the website for prices and availability.**



Heritage Holiday Houses

Cockatoo Island / Wareamah has two Federation-style Heritage Houses. Set amidst lush gardens on the upper island, these self-contained, five-bedroom houses are ideal for groups of up to eight people, or twelve with additional bedding.

— **24A and 24B | Four bedroom:** Sleeps 8, maximum 12 with additional sofa, roll-away bed and 5th bedroom.



Harbour View Apartments

Our Harbour View Apartments include one single room apartment and two double bedroom apartments. Each apartment has a large entertaining balcony facing east, with incredible views across Sydney Harbour and to the city.

— **23A and 23B | Two bedroom:** Sleeps 4, or 5 guests with additional roll-away bed. Apartments can be interconnecting.
— **23C | One bedroom:** Sleeps 2 guests.



Garden Riverview Apartment

The Garden Riverview Apartment is a semi-detached, self-contained two-bedroom apartment that sleeps up to four people. With a large entertaining balcony and a spacious enclosed garden area, the apartment is perfect for families or people who just want some extra room to relax.

— **21B | Two bedroom:** Sleeps 4, or 5 guests with additional roll-away bed.



Fire Station Studio

Formerly the island's Fire Station, Building 164 is now a comfortable studio apartment which boasts impressive harbour views from the open plan living area and bedroom.

— **Studio:** Sleeps 2, or 3 guests with additional roll-away bed.

Waterfront campground



Check into our award-winning waterfront campground, featuring unbeatable views of Sydney Harbour as well as access to scenic picnic spots, BBQ facilities and cafés!

You can choose from five camping options, catering for a range of budgets, group sizes and occasions, from romantic getaways to family vacations. **Visit cockatooisland.gov.au for package inclusions, pricing, FAQs and accommodation deals.**

BYO tent camping sites

If you're a seasoned camper or on a budget, you can book a 4m x 4m site and pitch your own tent.

Four people per site.

Camping Packages

Includes a pre-erected 2.4m x 2.4m dome tent with two sleeping mats and camping chairs.

Sleeps up to 3 adults OR 2 adults and 2 small children.



The campground

Deluxe Camping Packages*

Deluxe Camping Package

Includes a pre-erected 2.4m x 2.4m tent set back from the water's edge, two raised single beds with mattresses, linen, towels and chairs.

Sleeps 2 guests. Note: Esky and lantern not included.

Deluxe Waterfront Two-bedroom Camping Package

Includes two pre-erected 3m x 3m tents with a covered communal area, a waterfront location, four raised single beds with mattresses, linen, sun lounges, an Esky and a lantern.

Sleeps 4 guests.

Deluxe Waterfront Camping Package

Includes a pre-erected 3m x 3m tent on the waterfront, two raised single beds with mattresses, linen, sun lounges, an Esky and a lantern.

Sleeps 2 guests.



Deluxe Waterfront Camping Package

Did you know?

Since our establishment, the Harbour Trust has remediated, rehabilitated and enabled the adaptive reuse of sites and buildings that were previously locked away. We have created extraordinary precincts and parklands that provide a lasting legacy to the people of Australia.

The Harbour Trust continually looks to further weave Cockatoo Island / Wareamah into the life of the city as an internationally renowned cultural and visitor destination.

Be involved

Interested in volunteering, signing up for our e-newsletter or finding out more about the Harbour Trust?

Visit us at: harbourtrust.gov.au cockatooisland.gov.au

Stay connected

Send us an email: info@harbourtrust.gov.au

Or follow us on social media:

[@harbourtrust](https://www.facebook.com/harbourtrust)
[@CockatooIslandSydneyHarbour](https://www.facebook.com/CockatooIslandSydneyHarbour)
[@CockatooIsland](https://www.instagram.com/CockatooIsland)

Emergency

In case of emergency, phone Triple Zero (000) or 112 if mobile coverage is limited and state your location.

Then contact:

Ranger
0434 652 153 | 8am – 4pm
Security
0433 632 791 | 4pm – 8am

Convict Precinct
 In 2010, the convict penal establishment was inscribed on the UNESCO World Heritage List, together with ten other historic convict sites in Australia.

Industrial Precinct
 A powerhouse of industry for over a century (1857-1991), Cockatoo Island / Wareamah was Australia's primary shipbuilding and repair facility.

Docks Precinct
 Cockatoo Island / Wareamah was Australia's first naval dockyard for the Royal Australian Navy (1913-1921) and continued to support and build ships until its closure in 1991.

Ship Design Precinct
 Learn about the 'clean trades' conducted on the Island and stop by some of the trade-specific buildings, such as the Pattern Shop, Joiners' Shop or Estimating and Drawing Offices.

Historic Residence Precinct
 Cockatoo Island / Wareamah features more than two centuries of architectural style, with Biloela House the most prominent residential building on the island. These residences were constructed to house various officials and their families, with many additions being added throughout their lifetime.

PLEASE NOTE
 Cockatoo Island / Wareamah is a former industrial site. There are occasional unmarked and uneven surfaces, voids, trip hazards, cliffs and steep drops. There are also occasional construction activities, events and the presence of vehicles. To ensure you enjoy your visit, please mind your step, wear appropriate footwear and keep a close watch on any children with you and take care at all times.



Legend

→ → → Suggested pathway trail — Lower Island		→ → → Suggested pathway trail — Upper Island	
Visitor Centre	Buildings form part of the UNESCO World Heritage listing	Cockatoo Island / Wareamah Wharf	Defibrillator (AED)
Toilets	Accommodation	Dog-Leg Tunnel Cinema	Ferry tickets
Accessible toilets	BBQ	First Aid	Firepit
Café	Camber Wharf	Emergency Assembly point	Lockers
		Lookout	Ranger/Security office
		Shipyard Stories at Biloela House	Vending machine
		Stairs	Water fountains
		Tunnel entry/exit	

Accessibility
 The campground is wheelchair accessible, with an accessible shower and toilet available.
 Please Note: Tents have a step to enter, which is not suitable for wheelchair access.
 To discuss accessibility, contact stay@cockatooisland.gov.au

Volunteer
 Would you like to volunteer at this iconic site?
 Join our volunteer teams:
 Visitor services | Gardening | Restoration
harbourtrust.gov.au/volunteer

